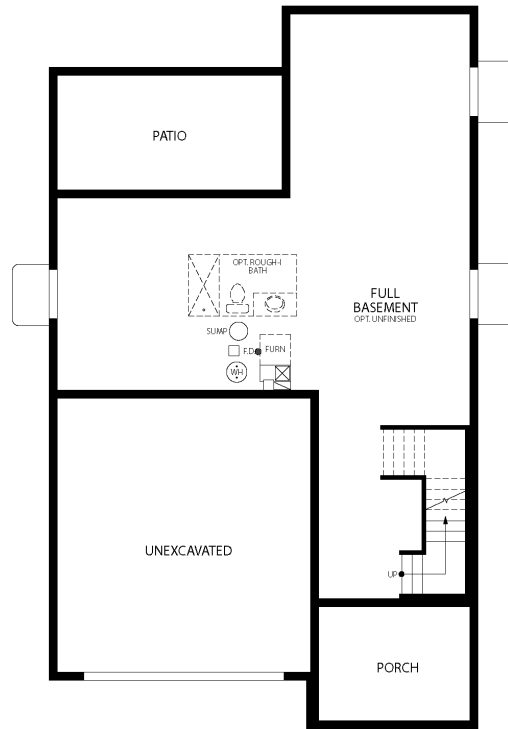
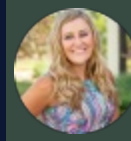


## The Rowling Plan

The Rowling floorplan includes dedicated office space on the main floor along with a spacious and thoughtful kitchen/dining/living layout. Upstairs you will find a roomy loft, an expansive master suite with a generous walk-in closet, and 2 guest bedrooms. This home also includes a finished basement with a rec room. This is the perfect family home with space for everyone.

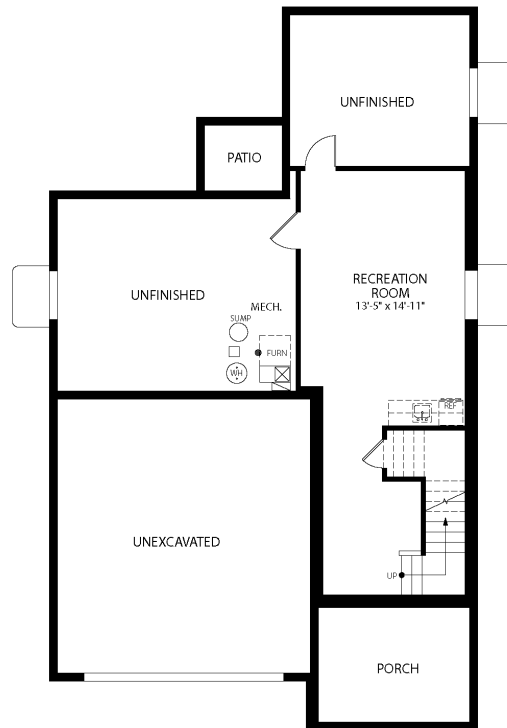
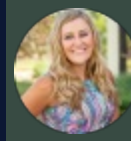
**CALL 970-716-6088 TO SCHEDULE A 1 ON 1 APPOINTMENT**



UNFINISHED FULL BASEMENT

CALL 970-716-6088 TO SCHEDULE A 1 ON 1 APPOINTMENT

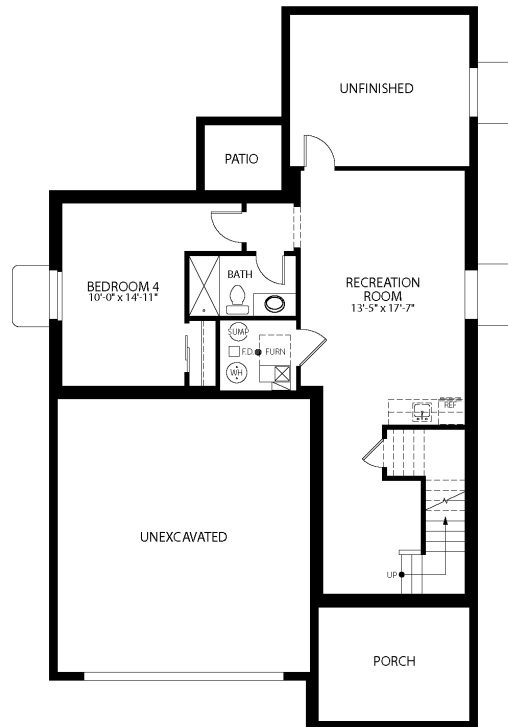
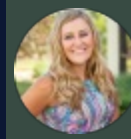
Plans and elevations are artist's renderings only, may not accurately represent the actual condition of a home as constructed, and may contain options which are not standard on all models. We reserve the right to make changes to these floor plans, specifications, and elevations without prior notice. Stated dimensions and square footage are approximate and should not be used as representation of the home's precise or actual size.



FINISHED REC ROOM PARTIAL BASEMENT

CALL 970-716-6088 TO SCHEDULE A 1 ON 1 APPOINTMENT

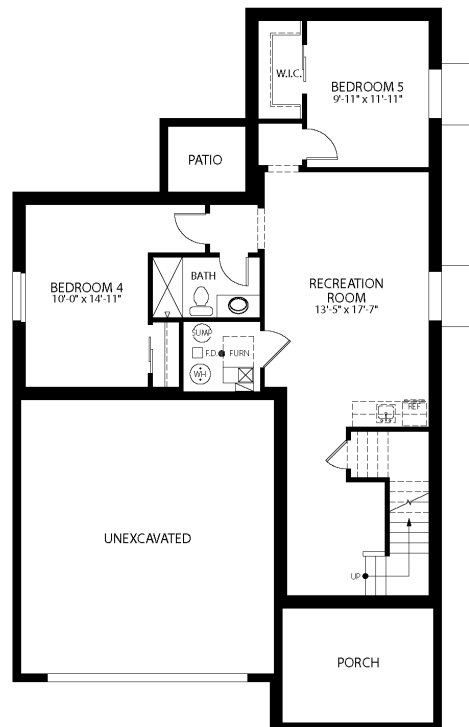
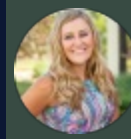
Plans and elevations are artist's renderings only, may not accurately represent the actual condition of a home as constructed, and may contain options which are not standard on all models. We reserve the right to make changes to these floor plans, specifications, and elevations without prior notice. Stated dimensions and square footage are approximate and should not be used as representation of the home's precise or actual size.



FINISHED FULL BASEMENT-1

CALL 970-716-6088 TO SCHEDULE A 1 ON 1 APPOINTMENT

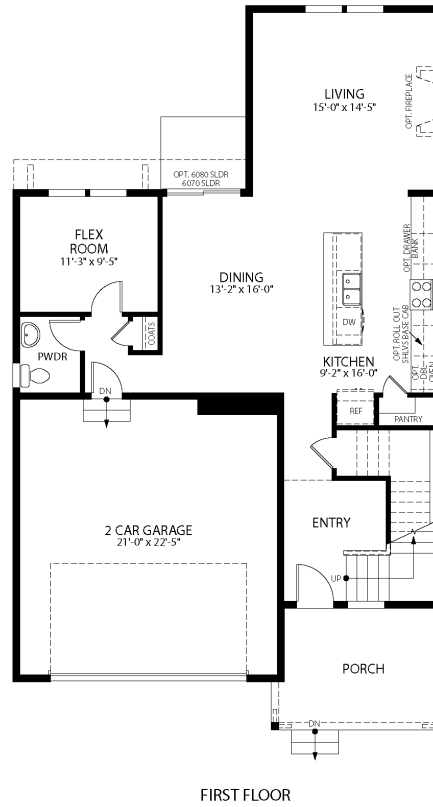
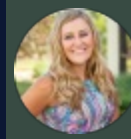
Plans and elevations are artist's renderings only, may not accurately represent the actual condition of a home as constructed, and may contain options which are not standard on all models. We reserve the right to make changes to these floor plans, specifications, and elevations without prior notice. Stated dimensions and square footage are approximate and should not be used as representation of the home's precise or actual size.



OPT. FINISHED FULL BASEMENT-2

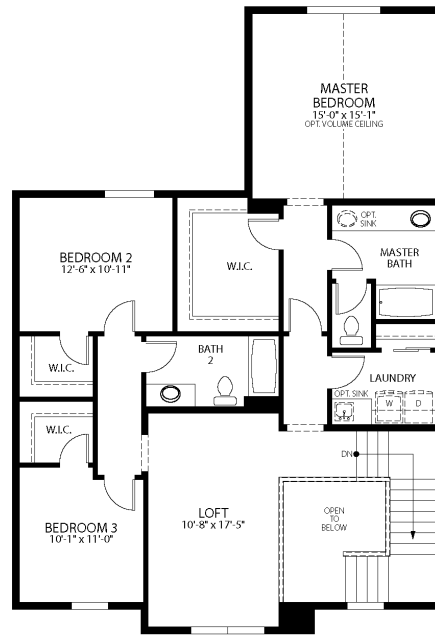
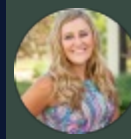
CALL 970-716-6088 TO SCHEDULE A 1 ON 1 APPOINTMENT

Plans and elevations are artist's renderings only, may not accurately represent the actual condition of a home as constructed, and may contain options which are not standard on all models. We reserve the right to make changes to these floor plans, specifications, and elevations without prior notice. Stated dimensions and square footage are approximate and should not be used as representation of the home's precise or actual size.



CALL 970-716-6088 TO SCHEDULE A 1 ON 1 APPOINTMENT

Plans and elevations are artist's renderings only, may not accurately represent the actual condition of a home as constructed, and may contain options which are not standard on all models. We reserve the right to make changes to these floor plans, specifications, and elevations without prior notice. Stated dimensions and square footage are approximate and should not be used as representation of the home's precise or actual size.



SECOND FLOOR

CALL 970-716-6088 TO SCHEDULE A 1 ON 1 APPOINTMENT

Plans and elevations are artist's renderings only, may not accurately represent the actual condition of a home as constructed, and may contain options which are not standard on all models. We reserve the right to make changes to these floor plans, specifications, and elevations without prior notice. Stated dimensions and square footage are approximate and should not be used as representation of the home's precise or actual size.