
ELEVATION 1

ELEVATION 2

ELEVATION 3

ELEVATION 4

The Morrison Plan

The Morrison is a spacious and versatile home designed with both comfort and functionality in mind. Featuring up to **5 bedrooms, 3.5 bathrooms, and a 2-car garage with tandem space**, this floorplan offers the flexibility modern families need.

Main Level

Step into an inviting foyer that opens to the bright and airy **great room**, seamlessly connected to the **kitchen** and **dining area**. The kitchen boasts an oversized island, walk-in pantry, and optional roll-out cabinets, perfect for family meals or entertaining. A covered patio extends your living space outdoors, while the **master suite** offers a private retreat with a spa-like bath, dual vanities, a walk-in shower, and an expansive closet. Two additional bedrooms and a shared bath complete this level, along with a powder bath, laundry, and a convenient owner's entry from the garage.

Finished Basement Option

The finished basement transforms the lower level into an entertainer's dream with a large **recreation room**, optional wet bar, and plenty of storage. Two additional bedrooms and a full bath provide ideal space for guests, teens, or multi-generational living.

Unfinished Basement Option

CALL 970-716-6088 TO SCHEDULE A 1 ON 1 APPOINTMENT

For those who prefer to customize, the unfinished basement provides **1,296 square feet** of flexible space ready for your vision, whether that's a home gym, media room, or hobby space. Plans and elevations are artist's renderings only, may not accurately represent the actual condition of a home as constructed, and may contain options which are not standard on all models. We reserve the right to change these without notice. Square footages are approximate and should not be used as representation of the home's precise or actual size.



Morrison First Level Farmhouse

MORRISON - FIRST LEVEL FARMHOUSE



CALL 970-716-6088 TO SCHEDULE A 1 ON 1 APPOINTMENT

Plans and elevations are artist's renderings only, may not accurately represent the actual condition of a home as constructed, and may contain options which are not standard on all models. We reserve the right to make changes to these floor plans, specifications, and elevations without prior notice. Stated dimensions and square footage are approximate and should not be used as representation of the home's precise or actual size.



Morrison First Level Craftsman

MORRISON - FIRST LEVEL
CRAFTSMAN



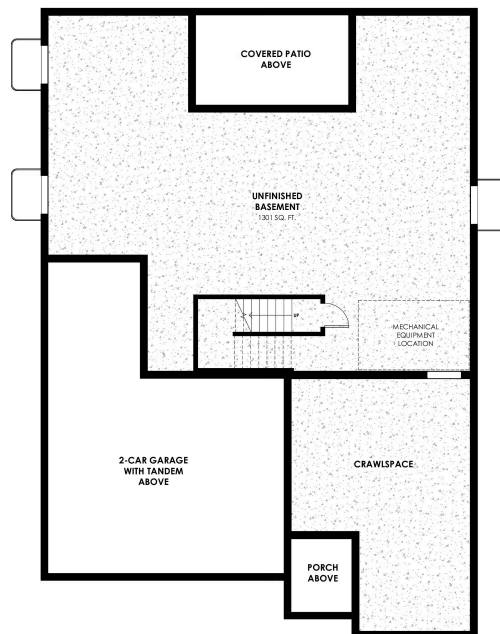
CALL 970-716-6088 TO SCHEDULE A 1 ON 1 APPOINTMENT

Plans and elevations are artist's renderings only, may not accurately represent the actual condition of a home as constructed, and may contain options which are not standard on all models. We reserve the right to make changes to these floor plans, specifications, and elevations without prior notice. Stated dimensions and square footage are approximate and should not be used as representation of the home's precise or actual size.



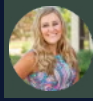
Morrison Unfinished Basement

MORRISON - UNFINISHED BASEMENT



CALL 970-716-6088 TO SCHEDULE A 1 ON 1 APPOINTMENT

Plans and elevations are artist's renderings only, may not accurately represent the actual condition of a home as constructed, and may contain options which are not standard on all models. We reserve the right to make changes to these floor plans, specifications, and elevations without prior notice. Stated dimensions and square footage are approximate and should not be used as representation of the home's precise or actual size.



Morrison Finished Basement

CALL 970-716-6088 TO SCHEDULE A 1 ON 1 APPOINTMENT

Plans and elevations are artist's renderings only, may not accurately represent the actual condition of a home as constructed, and may contain options which are not standard on all models. We reserve the right to make changes to these floor plans, specifications, and elevations without prior notice. Stated dimensions and square footage are approximate and should not be used as representation of the home's precise or actual size.