

1821 Bounty #6, Windsor, CO 80550

Community: Raindance Condos **Floor Plan:** Rockefeller

\$444,545

 1,395 Finished Sq Ft.
  2 Bedrooms
  2.0 Full Baths
  2 Car Garage
  2.0 Stories



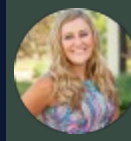
****Estimated Completion Date: March 2025****

The Rockefeller is a second-level condo unit that provides stunning views and an abundance of natural light. Upon arrival through the front door, you will find an entrance hallway perfect for a key drop or mudroom area. Once up the stairs, you will discover spacious, open-concept living. You will notice the unique arched ceiling and generous amount of windows throughout the living room. A covered deck is right off the living room. Down the hall you will discover a guest bedroom/office space, guest bathroom and Owner's suite. This unit has a **courtyard view!**

This home will be finished with stainless steel appliance package with fridge, washer & dryer, white shaker cabinets, white quartz countertops, black kitchen & bathroom faucets, black cabinet pulls, geosapes 4x16 taupe kitchen backsplash, chapman luxury vinyl plank flooring, smokey gray carpet in bedrooms, black ceiling fan in living room & master, garage door opener, A/C, blinds. **Washer, dryer, and fridge included!**

Photos are from a completed home of the same floor plan, therefore finishes depicted may differ from those outlined below.

CALL 970-716-6088 TO SCHEDULE A 1 ON 1 APPOINTMENT

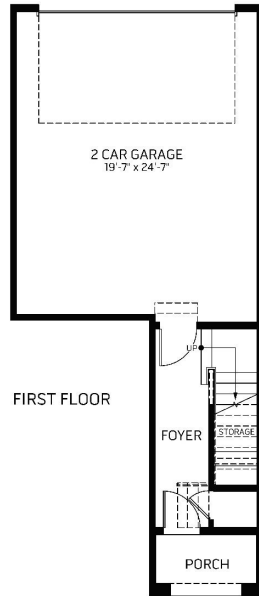


1821 Bounty #6, Windsor, CO 80550

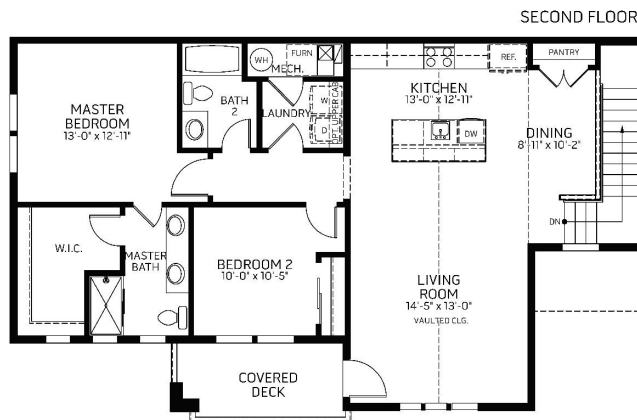
Community: Raindance Condos **Floor Plan:** Rockefeller

\$444,545

1,395 Finished Sq Ft.
 2 Bedrooms
 2.0 Full Baths
 2 Car Garage
 2.0 Stories



Plan: Rockefeller



*Floor plan and specifications subject to change without notice.

CALL 970-716-6088 TO SCHEDULE A 1 ON 1 APPOINTMENT

Plans and elevations are artist's renderings only, may not accurately represent the actual condition of a home as constructed, and may contain options which are not standard on all models. We reserve the right to make changes to these floor plans, specifications, and elevations without prior notice. Stated dimensions and square footage are approximate and should not be used as representation of the home's precise or actual size.