



## Twain

**Community:** Trailside Story Collection - Single Family Homes

Starting From  
**\$649,000**

 2,570 - 2,984 Finished Sq Ft.  4 - 5 Bedrooms  2.5 Full Baths  3 Car Garage  2.0 Stories



ELEVATION 1



ELEVATION 2

### The Twain Plan

The Twain floorplan is one you will fall in love with the minute you walk through the door. It features a stunning foyer, an office up front, and a generous kitchen that will wow your guests. Upstairs you will find 4 bedrooms, upstairs laundry for convenience and an exceptional loft space. This is our largest floorplan available perfect for bigger families, or growing families!

**CALL 970-716-6088 TO SCHEDULE A 1 ON 1 APPOINTMENT**

Plans and elevations are artist's renderings only, may not accurately represent the actual condition of a home as constructed, and may contain options which are not standard on all models. We reserve the right to make changes to these floor plans, specifications, and elevations without prior notice. Stated dimensions and square footage are approximate and should not be used as representation of the home's precise or actual size.



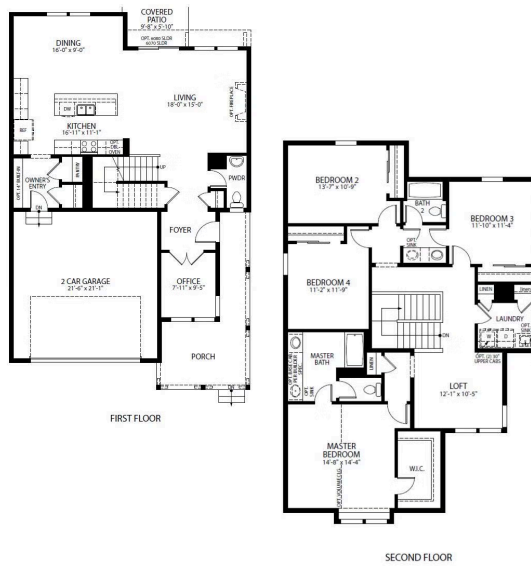
## Twain

**Community:** Trailside Story Collection - Single Family Homes

Starting From  
**\$649,000**

2,570 - 2,984 Finished Sq Ft. 4 - 5 Bedrooms 2.5 Full Baths 3 Car Garage 2.0 Stories

### Twain Floor Plan



All measurements are approximate and not guaranteed. Illustration provided for marketing and convenience only and is not part of a legally binding contract.

**CALL 970-716-6088 TO SCHEDULE A 1 ON 1 APPOINTMENT**

Plans and elevations are artist's renderings only, may not accurately represent the actual condition of a home as constructed, and may contain options which are not standard on all models. We reserve the right to make changes to these floor plans, specifications, and elevations without prior notice. Stated dimensions and square footage are approximate and should not be used as representation of the home's precise or actual size.



## Twain

**Community:** Trailside Story Collection - Single Family Homes

Starting From  
**\$649,000**

 2,570 - 2,984 Finished Sq Ft.  4 - 5 Bedrooms  2.5 Full Baths  3 Car Garage  2.0 Stories

### Twain Floor Plan



All measurements are approximate and not guaranteed. Illustration provided for marketing and convenience only and is not part of a legally binding contract.

**CALL 970-716-6088 TO SCHEDULE A 1 ON 1 APPOINTMENT**

Plans and elevations are artist's renderings only, may not accurately represent the actual condition of a home as constructed, and may contain options which are not standard on all models. We reserve the right to make changes to these floor plans, specifications, and elevations without prior notice. Stated dimensions and square footage are approximate and should not be used as representation of the home's precise or actual size.