





Christie

Community: Trailside Story Collection - Single Family Homes

Starting From
\$626,500

 2,540 Finished Sq Ft.
  4 Bedrooms
  3 Full Baths
  2 Car Garage
  2.0 Stories



ELEVATION 1



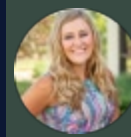
ELEVATION 2

The Christie Plan

The Christie floorplan is a 4 bed, 3 bath ranch style home with versatile design. Featuring a foyer and galley way entrance, this home feels elegant and special immediately upon entrance. The kitchen flows seamlessly into the living and dining rooms, giving you ample space to gather with your family. A finished basement is included with this home and will feature 2 bedrooms and a bath. The front room of the house has an amazing, pointed, vaulted ceiling that will spark conversation for years to come.

CALL 970-716-6088 TO SCHEDULE A 1 ON 1 APPOINTMENT

Plans and elevations are artist's renderings only, may not accurately represent the actual condition of a home as constructed, and may contain options which are not standard on all models. We reserve the right to make changes to these floor plans, specifications, and elevations without prior notice. Stated dimensions and square footage are approximate and should not be used as representation of the home's precise or actual size.



Christie

Community: Trailside Story Collection - Single Family Homes

 2,540 Finished Sq. Ft.
 4 Bedrooms
 3 Full Baths
 2 Car Garage
 2.0 Stories

Starting From
\$626,500

Christie Floor Plan



All measurements are approximate and not guaranteed. Illustration provided for marketing and convenience only and is not part of a legally binding contract.

CALL 970-716-6088 TO SCHEDULE A 1 ON 1 APPOINTMENT

Plans and elevations are artist's renderings only, may not accurately represent the actual condition of a home as constructed, and may contain options which are not standard on all models. We reserve the right to make changes to these floor plans, specifications, and elevations without prior notice. Stated dimensions and square footage are approximate and should not be used as representation of the home's precise or actual size.