

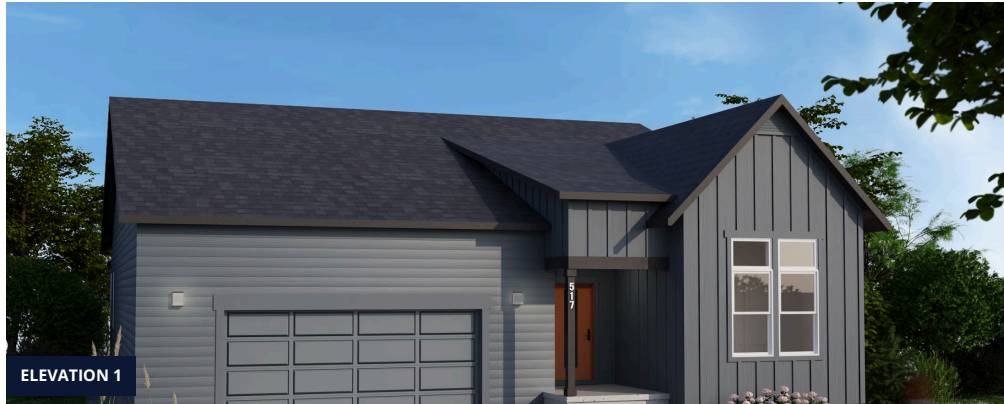


## Morrison

**Community:** Trailside Story Collection - Single Family Homes

Starting From  
**\$619,000**

 1,890 - 3,186 Finished Sq Ft.
  3 - 5 Bedrooms
  2.5 - 3.5 Full Baths
  2.5 Car Garage
  1.0 Stories



ELEVATION 1



ELEVATION 2



ELEVATION 3



ELEVATION 4

### The Morrison Plan

The Morrison is a spacious and versatile home designed with both comfort and functionality in mind. Featuring up to **5 bedrooms, 3.5 bathrooms, and a 2-car garage with tandem space**, this floorplan offers the flexibility modern families need.

### Main Level

Step into an inviting foyer that opens to the bright and airy **great room**, seamlessly connected to the **kitchen** and **dining area**. The kitchen boasts an oversized island, walk-in pantry, and optional roll-out cabinets, perfect for family meals or entertaining. A covered patio extends your living space outdoors, while the **master suite** offers a private retreat with a spa-like bath, dual vanities, a walk-in shower, and an expansive closet. Two additional bedrooms and a shared bath complete this level, along with a powder bath, laundry, and a convenient owner's entry from the garage.

### Finished Basement Option

The finished basement transforms the lower level into an entertainer's dream with a large **recreation room**.

CALL 970-716-6088 TO SCHEDULE A 1 ON 1 APPOINTMENT

Plans and elevations are artist's renderings only, may not accurately represent the actual home as constructed, and may contain options which are not standard on all models. We reserve the right to make changes to these floor plans, specifications, and elevations without prior notice. Stated dimensions and square footage are approximate and should not be used as representation of the home's precise or actual size.

### Unfinished Basement Option



Morrison

**Community:** Trailside Story Collection - Single Family Homes

Starting From  
**\$619,000**

1,890 - 3,186 Finished Sq Ft. 3 - 5 Bedrooms 2.5 - 3.5 Full Baths 2.5 Car Garage 1.0 Stories

Morrison First Level Farmhouse

MORRISON - FIRST LEVEL FARMHOUSE



CALL 970-716-6088 TO SCHEDULE A 1 ON 1 APPOINTMENT

Plans and elevations are artist's renderings only, may not accurately represent the actual condition of a home as constructed, and may contain options which are not standard on all models. We reserve the right to make changes to these floor plans, specifications, and elevations without prior notice. Stated dimensions and square footage are approximate and should not be used as representation of the home's precise or actual size.



**Morrison**  
**Community:** Trailside Story Collection - Single Family Homes

Starting From  
**\$619,000**

1,890 - 3,186 Finished Sq Ft. 3 - 5 Bedrooms 2.5 - 3.5 Full Baths 2.5 Car Garage 1.0 Stories

**Morrison First Level Craftsman**

**MORRISON - FIRST LEVEL**  
CRAFTSMAN



**CALL 970-716-6088 TO SCHEDULE A 1 ON 1 APPOINTMENT**

Plans and elevations are artist's renderings only, may not accurately represent the actual condition of a home as constructed, and may contain options which are not standard on all models. We reserve the right to make changes to these floor plans, specifications, and elevations without prior notice. Stated dimensions and square footage are approximate and should not be used as representation of the home's precise or actual size.



### Morrison

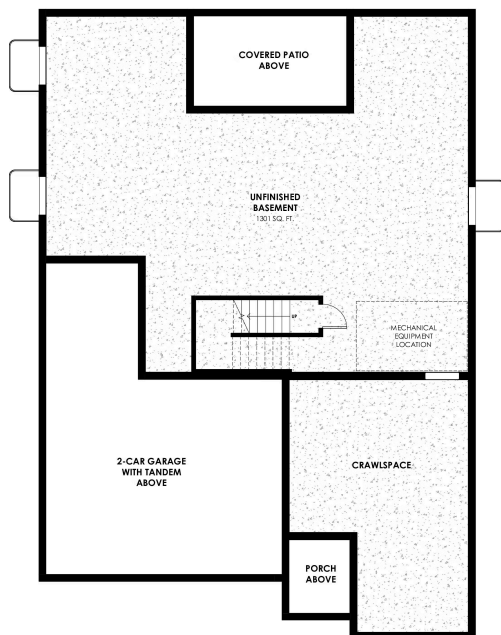
**Community:** Trailside Story Collection - Single Family Homes

Starting From  
**\$619,000**

1,890 - 3,186 Finished Sq Ft. 3 - 5 Bedrooms 2.5 - 3.5 Full Baths 2.5 Car Garage 1.0 Stories

## Morrison Unfinished Basement

MORRISON - UNFINISHED BASEMENT



**CALL 970-716-6088 TO SCHEDULE A 1 ON 1 APPOINTMENT**

Plans and elevations are artist's renderings only, may not accurately represent the actual condition of a home as constructed, and may contain options which are not standard on all models. We reserve the right to make changes to these floor plans, specifications, and elevations without prior notice. Stated dimensions and square footage are approximate and should not be used as representation of the home's precise or actual size.



## Morrison

**Community:** Trailside Story Collection - Single Family Homes

Starting From  
**\$619,000**

 1,890 - 3,186 Finished Sq Ft.  3 - 5 Bedrooms  2.5 - 3.5 Full Baths  2.5 Car Garage  1.0 Stories

## Morrison Finished Basement

CALL 970-716-6088 TO SCHEDULE A 1 ON 1 APPOINTMENT

Plans and elevations are artist's renderings only, may not accurately represent the actual condition of a home as constructed, and may contain options which are not standard on all models. We reserve the right to make changes to these floor plans, specifications, and elevations without prior notice. Stated dimensions and square footage are approximate and should not be used as representation of the home's precise or actual size.