

## Fitzgerald

**Community:** Trailside Story Collection - Single Family Homes

Starting From  
**\$592,500**

 2,013 - 2,543 Finished Sq Ft.  3 Bedrooms  2.5 Full Baths  2 Car Garage  2.0 Stories



ELEVATION 1



ELEVATION 2

## The Fitzgerald Plan

The Fitzgerald floorplan features functional open living with a great eat-in island in the kitchen, perfect for gathering around with family or friends. You will find the washer and dryer upstairs for convenience and a spacious master bedroom with a double vanity in the master bath. This 3 bed, 2.5 bath home delivers style, craftsmanship and comfortable living!

CALL 970-716-6088 TO SCHEDULE A 1 ON 1 APPOINTMENT

Plans and elevations are artist's renderings only, may not accurately represent the actual condition of a home as constructed, and may contain options which are not standard on all models. We reserve the right to make changes to these floor plans, specifications, and elevations without prior notice. Stated dimensions and square footage are approximate and should not be used as representation of the home's precise or actual size.

**Community:** Trailside Story Collection - Single Family Homes

Starting From  
**\$592,500**

 2,013 - 2,543 Finished Sq Ft.
  3 Bedrooms
  2.5 Full Baths
  2 Car Garage
  2.0 Stories

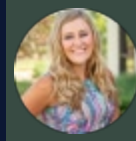
## Fitzgerald Floor Plan



All measurements are approximate and not guaranteed. Illustration provided for marketing and convenience only and is not part of a legally binding contract.

**CALL 970-716-6088 TO SCHEDULE A 1 ON 1 APPOINTMENT**

Plans and elevations are artist's renderings only, may not accurately represent the actual condition of a home as constructed, and may contain options which are not standard on all models. We reserve the right to make changes to these floor plans, specifications, and elevations without prior notice. Stated dimensions and square footage are approximate and should not be used as representation of the home's precise or actual size.



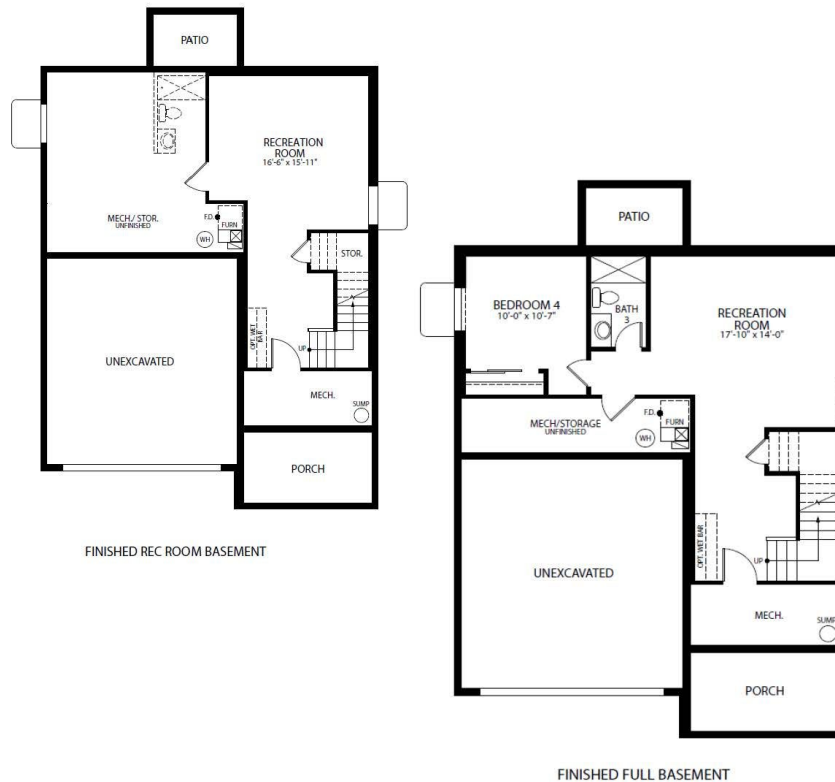
# Fitzgerald

**Community:** Trailside Story Collection - Single Family Homes

 2,013 - 2,543 Finished Sq Ft.
  3 Bedrooms
  2.5 Full Baths
  2 Car Garage
  2.0 Stories

Starting From  
**\$592,500**

## Fitzgerald Floor Plan



All measurements are approximate and not guaranteed. Illustration provided for marketing and convenience only and is not part of a legally binding contract.

**CALL 970-716-6088 TO SCHEDULE A 1 ON 1 APPOINTMENT**

Plans and elevations are artist's renderings only, may not accurately represent the actual condition of a home as constructed, and may contain options which are not standard on all models. We reserve the right to make changes to these floor plans, specifications, and elevations without prior notice. Stated dimensions and square footage are approximate and should not be used as representation of the home's precise or actual size.