



Christie

Community: Trailside Story Collection - Single Family Homes

Starting From
\$606,500

 2,660 Finished Sq Ft.  4 Bedrooms  3 Full Baths  2 Car Garage  1.0 Stories



ELEVATION 1



ELEVATION 2

The Christie Plan

The **Christie** is a beautifully designed ranch-style home that blends open-concept living with thoughtful functionality, offering everything you need on one convenient level—plus the option of a finished basement for even more space.

Step through the welcoming **foyer** into a bright and spacious layout. The heart of the home features an open **kitchen, dining, and living area**, perfect for entertaining or cozy nights in. A **sliding door** opens to a **patio** with an optional extended or covered layout for year-round outdoor living.

The **primary suite** is tucked at the rear of the home for privacy, complete with a large **walk-in closet** and a spa-inspired **bathroom** featuring dual sinks and a walk-in shower. A **secondary bedroom** with adjacent full bath at the front of the home provides comfort for guests or family. Everyday convenience is built in with a **laundry room** just off the **2-car garage**, plus extra pantry and storage space.

Finished Basement

The finished basement adds two additional bedrooms with closets, a full bath, and a generous recreation room—ideal for a home theater, gym, or game space.

CALL 970-716-6088 TO SCHEDULE A 1 ON 1 APPOINTMENT

Plans and elevations are artist's renderings only, may not accurately represent the actual condition of a home as constructed, and may contain options which are not standard on all models. We reserve the right to make changes to these floor plans, specifications, and elevations without prior notice. Stated dimensions and square footage are approximate and should not be used as representation of the home's precise or actual size.



Christie

Community: Trailside Story Collection - Single Family Homes

2,660 Finished Sq Ft. 4 Bedrooms 3 Full Baths 2 Car Garage 1.0 Stories

Starting From
\$606,500

Christie Floor Plan



All measurements are approximate and not guaranteed. Illustration provided for marketing and convenience only and is not part of a legally binding contract.

CALL 970-716-6088 TO SCHEDULE A 1 ON 1 APPOINTMENT

Plans and elevations are artist's renderings only, may not accurately represent the actual condition of a home as constructed, and may contain options which are not standard on all models. We reserve the right to make changes to these floor plans, specifications, and elevations without prior notice. Stated dimensions and square footage are approximate and should not be used as representation of the home's precise or actual size.



Christie

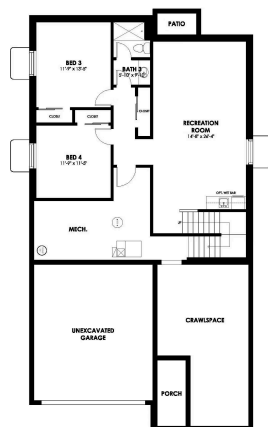
Community: Trailside Story Collection - Single Family Homes

 2,660 Finished Sq Ft.  4 Bedrooms  3 Full Baths  2 Car Garage  1.0 Stories

Starting From
\$606,500

Christie Floor Plan

CHRISTIE - FINISHED BASEMENT



All measurements are approximate and not guaranteed. Illustration provided for marketing and convenience only and is not part of a legally binding contract.

CALL 970-716-6088 TO SCHEDULE A 1 ON 1 APPOINTMENT

Plans and elevations are artist's renderings only, may not accurately represent the actual condition of a home as constructed, and may contain options which are not standard on all models. We reserve the right to make changes to these floor plans, specifications, and elevations without prior notice. Stated dimensions and square footage are approximate and should not be used as representation of the home's precise or actual size.