

6085 Saddle Horn, Timnath, CO 80547

Community: Trailside Story Collection - Single Family Homes

Floor Plan: Twain

\$693,845

2,570 Finished Sq Ft. 4 Bedrooms 2.5 Full Baths 2 Car Garage 2.0 Stories



****Estimated Completion Date: October/November 2024****

This home qualifies for our current incentive options: a locked 30-year interest rate as low as 4.49% OR up to \$35,000 in flex cash - Call or text us for more information: 970-716-6088. Buyer must contract by October 31st and close by December 20th, 2024.

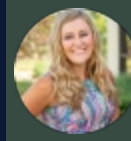
The Twain floorplan is one you will fall in love with the minute you walk through the door. It features a stunning foyer, an office up front, and a generous kitchen that will wow your guests. Upstairs you will find 4 bedrooms, upstairs laundry for convenience and an exceptional loft space. This is our largest floorplan available perfect for bigger families, or growing families!

This home is finished with White Icing traditional cabinets with black bar pulls, Chef's Delight Appliance package with dual fuel range and range hood, Crema Carmel (granite) countertops throughout the home, Silver Dollar vinyl plank flooring, Matte Black door levers and plumbing fixtures, Bench with Cubbies and Coat Hooks, Taupe Herringbone backsplash, Expanded rear patio

Photos are from a completed home of the same floor plan, therefore finishes depicted may differ from those outlined below.

CALL 970-716-6088 TO SCHEDULE A 1 ON 1 APPOINTMENT

Plans and elevations are artist's renderings only, may not accurately represent the actual condition of a home as constructed, and may contain options which are not standard on all models. We reserve the right to make changes to these floor plans, specifications, and elevations without prior notice. Stated dimensions and square footage are approximate and should not be used as representation of the home's precise or actual size.



6085 Saddle Horn, Timnath, CO 80547

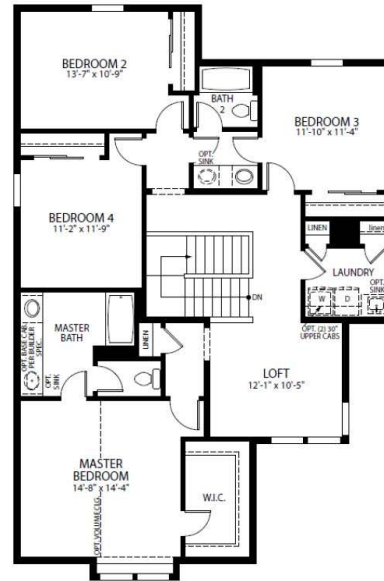
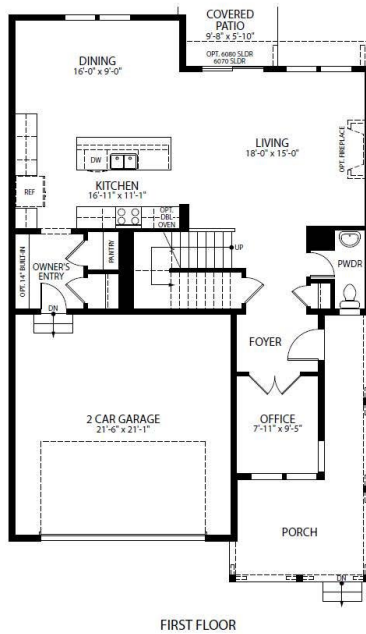
Community: Trailside Story Collection - Single Family Homes

Floor Plan: Twain

\$693,845

2,570 Finished Sq Ft.
 4 Bedrooms
 2.5 Full Baths
 2 Car Garage
 2.0 Stories

Twain Floor Plan



All measurements are approximate and not guaranteed. Illustration provided for marketing and convenience only and is not part of a legally binding contract.

CALL 970-716-6088 TO SCHEDULE A 1 ON 1 APPOINTMENT

Plans and elevations are artist's renderings only, may not accurately represent the actual condition of a home as constructed, and may contain options which are not standard on all models. We reserve the right to make changes to these floor plans, specifications, and elevations without prior notice. Stated dimensions and square footage are approximate and should not be used as representation of the home's precise or actual size.