

6061 Saddle Horn, Timnath, CO 80547

**Community:** Trailside Story Collection - Single Family Homes

**Floor Plan:** Christie

**\$702,590**

2,540 Finished Sq Ft. 4 Bedrooms 3.0 Full Baths 3 Car Garage 2.0 Stories



**\*\*Estimated Completion Date: November/December 2024\*\***

**This home qualifies for our current incentive options: a locked 30-year interest rate as low as 4.49% OR up to \$35,000 in flex cash - Call or text us for more information: 970-716-6088. Buyer must contract by October 31st and close by December 20th, 2024.**

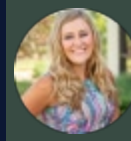
This Christie floorplan is a 4 bed, 3 bath ranch style home with versatile design. Featuring a foyer and galley way entrance, this home feels elegant and special immediately upon entrance. The kitchen flows seamlessly into the living and dining rooms, giving you ample space to gather with your family.

This home is finished with Java shaker cabinets, Gourmet Chef Induction Appliance Package with induction cooktop and built-in double ovens, Carrara Marmi quartz countertops throughout, Silver Dollar vinyl plank, Matte Black Nickel door levers, 5-panel interior doors, Brushed Nickel plumbing fixtures, Taupe Chevron Mosaic backsplash. This is a **garden level** home with a **3 car garage!**

Photos are from a completed home of the same floor plan, therefore finishes depicted may differ from those outlined below.

**CALL 970-716-6088 TO SCHEDULE A 1 ON 1 APPOINTMENT**

Plans and elevations are artist's renderings only, may not accurately represent the actual condition of a home as constructed, and may contain options which are not standard on all models. We reserve the right to make changes to these floor plans, specifications, and elevations without prior notice. Stated dimensions and square footage are approximate and should not be used as representation of the home's precise or actual size.



6061 Saddle Horn, Timnath, CO 80547

Community: Trailside Story Collection - Single Family Homes

Floor Plan: Christie

**\$702,590**

2,540 Finished Sq Ft. 4 Bedrooms 3.0 Full Baths 3 Car Garage 2.0 Stories

Christie  
Floor Plan



All measurements are approximate and not guaranteed. Illustration provided for marketing and convenience only and is not part of a legally binding contract.

CALL 970-716-6088 TO SCHEDULE A 1 ON 1 APPOINTMENT

Plans and elevations are artist's renderings only, may not accurately represent the actual condition of a home as constructed, and may contain options which are not standard on all models. We reserve the right to make changes to these floor plans, specifications, and elevations without prior notice. Stated dimensions and square footage are approximate and should not be used as representation of the home's precise or actual size.