



5286 Beckworth, Timnath, CO 80547

Community: Trailside Story Collection - Single Family Homes

Floor Plan: Christie

\$660,915

2,540 Finished Sq Ft. 4 Bedrooms 3.0 Full Baths 2 Car Garage 2.0 Stories



****MOVE-IN READY!****

This home qualifies for our current incentive: an interest rate starting as low as 2.99% for your first year, 3.99% for your second year, and 4.99% locked for your third through 30th years - Call or text Kendall for more information: [970-716-6088](tel:970-716-6088). Buyer must contract by August 31st and close by December 2024.

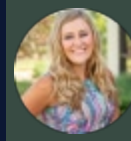
This Christie floorplan is a 4 bed, 3 bath ranch style home with versatile design. Featuring a foyer and galley way entrance, this home feels elegant and special immediately upon entrance. The kitchen flows seamlessly into the living and dining rooms, giving you ample space to gather with your family. **This home sides to greenspace and also has a finished basement!**

This home is finished with White Icing shaker cabinets, Gourmet Chef Induction Appliance Package with induction cooktop and built-in double ovens, Frost White (kitchen) and Blanco Maple (bathroom) quartz countertops, Saggio vinyl plank, Calacatta vinyl tile in bathrooms and laundry, Matte Black fixtures/door levers, Warm Grey gloss picket backsplash, 5-panel interior doors.

Photos are of the actual home!

CALL 970-716-6088 TO SCHEDULE A 1 ON 1 APPOINTMENT

Plans and elevations are artist's renderings only, may not accurately represent the actual condition of a home as constructed, and may contain options which are not standard on all models. We reserve the right to make changes to these floor plans, specifications, and elevations without prior notice. Stated dimensions and square footage are approximate and should not be used as representation of the home's precise or actual size.



5286 Beckworth, Timnath, CO 80547

Community: Trailside Story Collection - Single Family Homes

Floor Plan: Christie

\$660,915

2,540 Finished Sq Ft. 4 Bedrooms 3.0 Full Baths 2 Car Garage 2.0 Stories

Christie
Floor Plan



All measurements are approximate and not guaranteed. Illustration provided for marketing and convenience only and is not part of a legally binding contract.

CALL 970-716-6088 TO SCHEDULE A 1 ON 1 APPOINTMENT

Plans and elevations are artist's renderings only, may not accurately represent the actual condition of a home as constructed, and may contain options which are not standard on all models. We reserve the right to make changes to these floor plans, specifications, and elevations without prior notice. Stated dimensions and square footage are approximate and should not be used as representation of the home's precise or actual size.