

# Madame Curie

**Community:** Trailside Alley Load - Single Family Homes

 1,979 Finished Sq Ft.
  3 Bedrooms
  2.5 Full Baths
  2 Car Garage
  2.0 Stories



ELEVATION 1



ELEVATION 2

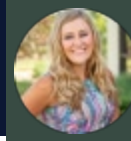
## The Madame Curie Plan

The Madame Curie floorplan provides “ranch like” living with a tranquil main floor master suite that features a large walk-in closet and dual vanity sink. The open living and dining area provide ample space for entertaining and lead to a covered patio. The second level provides two guest bedrooms, a full bath, and a cozy reading nook.

Basement options offered!

**CALL 970-716-6088 TO SCHEDULE A 1 ON 1 APPOINTMENT**

Plans and elevations are artist's renderings only, may not accurately represent the actual condition of a home as constructed, and may contain options which are not standard on all models. We reserve the right to make changes to these floor plans, specifications, and elevations without prior notice. Stated dimensions and square footage are approximate and should not be used as representation of the home's precise or actual size.



# Madame Curie

**Community:** Trailside Alley Load - Single Family Homes

 1,979 Finished Sq Ft.
  3 Bedrooms
  2.5 Full Baths
  2 Car Garage
  2.0 Stories

## Madame Curie Floor Plan

Level 1



Level 2



All measurements are approximate and not guaranteed. Illustration provided for marketing and convenience only and is not part of a legally binding contract.

CALL 970-716-6088 TO SCHEDULE A 1 ON 1 APPOINTMENT

Plans and elevations are artist's renderings only, may not accurately represent the actual condition of a home as constructed, and may contain options which are not standard on all models. We reserve the right to make changes to these floor plans, specifications, and elevations without prior notice. Stated dimensions and square footage are approximate and should not be used as representation of the home's precise or actual size.