



Galileo

Community: Trailside Alley Load - Single Family Homes

Starting From
\$544,500

 1,965 Finished Sq Ft.
  3 Bedrooms
  2.5 Full Baths
  2 Car Garage
  2.0 Stories



ELEVATION 1



ELEVATION 2

The Galileo Plan

The Galileo plan features an open-concept main floor layout with living room, dining area, kitchen with eat-in center island, and patio doors that lead to a private side yard and patio. The second floor provides an open loft space or optional 4th bedroom with a restful master suite with walk-in closet, dual sink vanity, and water closet, along with conveniently located laundry room, and two guest bedrooms and a full bath. The Galileo also has an optional, full unfinished basement for storage and future expansion in addition to an oversized 2-car garage for toys and gear.

CALL 970-716-6088 TO SCHEDULE A 1 ON 1 APPOINTMENT

Plans and elevations are artist's renderings only, may not accurately represent the actual condition of a home as constructed, and may contain options which are not standard on all models. We reserve the right to make changes to these floor plans, specifications, and elevations without prior notice. Stated dimensions and square footage are approximate and should not be used as representation of the home's precise or actual size.

Starting From
\$544,500

First Floor



CALL 970-716-6088 TO SCHEDULE A 1 ON 1 APPOINTMENT

Plans and elevations are artist's renderings only, may not accurately represent the actual condition of a home as constructed, and may contain options which are not standard on all models. We reserve the right to make changes to these floor plans, specifications, and elevations without prior notice. Stated dimensions and square footage are approximate and should not be used as representation of the home's precise or actual size.

Starting From
\$544,500






[illegible]

Plans and elevations are artist's renderings only, may not accurately represent the actual condition of a home as constructed, and may contain options which are not standard on all models. We reserve the right to make changes to these floor plans, specifications, and elevations without prior notice. Stated dimensions and square footage are approximate and should not be used as representation of the home's precise or actual size.



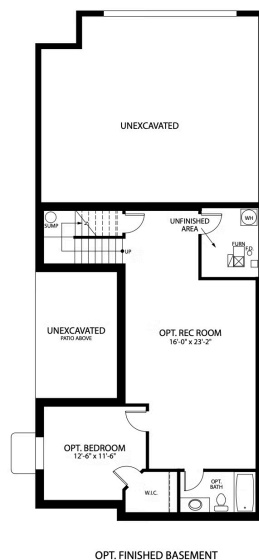
Galileo

Community: Trailside Alley Load - Single Family Homes

 1,965 Finished Sq Ft.
  3 Bedrooms
  2.5 Full Baths
  2 Car Garage
  2.0 Stories

Starting From
\$544,500

Finished Basement





CALL 970-716-6088 TO SCHEDULE A 1 ON 1 APPOINTMENT

Plans and elevations are artist's renderings only, may not accurately represent the actual condition of a home as constructed, and may contain options which are not standard on all models. We reserve the right to make changes to these floor plans, specifications, and elevations without prior notice. Stated dimensions and square footage are approximate and should not be used as representation of the home's precise or actual size.



Galileo

Community: Trailside Alley Load - Single Family Homes 1,965 Finished Sq Ft.  3 Bedrooms  2.5 Full Baths  2 Car Garage  2.0 StoriesStarting From
\$544,500

Unfinished Basement

CALL 970-716-6088 TO SCHEDULE A 1 ON 1 APPOINTMENT

Plans and elevations are artist's renderings only, may not accurately represent the actual condition of a home as constructed, and may contain options which are not standard on all models. We reserve the right to make changes to these floor plans, specifications, and elevations without prior notice. Stated dimensions and square footage are approximate and should not be used as representation of the home's precise or actual size.