



6113 Saddle Horn, Timnath, CO 80547

Community: Trailside Alley Load - Single Family Homes **Floor Plan:** Galileo

\$599,185

 2,785 Finished Sq Ft.  3 Bedrooms  2.5 Full Baths  2 Car Garage  2.0 Stories

MOVE-IN READY



The Galileo plan features an open-concept main floor layout with living room, dining area, kitchen with eat-in center island, and patio doors that lead to a private side yard and patio. The second floor provides a restful master suite with walk-in closet, dual sink vanity, and water closet, along with conveniently located laundry room, and two guest bedrooms and a full bath. This home also has a full unfinished basement for storage and future expansion in addition to an oversized 2-car garage for toys and gear.

This home is finished with the Chef's Delight Induction Appliance Package, Rough-In for Future Bath, Chai Latte Cabinets, Miami Oro Quartz Countertops throughout, Marina LVP throughout, Sandstone carpet, Satin Nickel Door Levers, Brushed Nickel Bath & Kitchen Fixtures, 3x6 White Bevel Subway tile in Kitchen, 4x16 Lullaby in Master Bath, and Alabaster Walls.

CALL 970-716-6088 TO SCHEDULE A 1 ON 1 APPOINTMENT


Plans and elevations are artist's renderings only, may not accurately represent the actual condition of a home as constructed, and may contain options which are not standard on all models. We reserve the right to make changes to these floor plans, specifications, and elevations without prior notice. Stated dimensions and square footage are approximate and should not be used as representation of the home's precise or actual size.



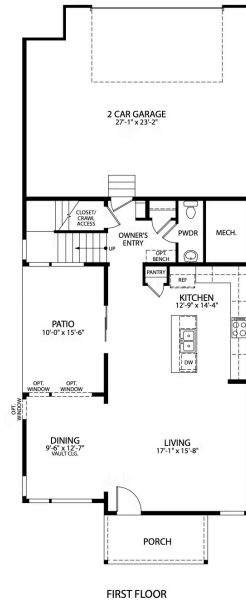
6113 Saddle Horn, Timnath, CO 80547

Community: Trailside Alley Load - Single Family Homes **Floor Plan:** Galine

\$599,185

 2,785 Finished Sq Ft.  3 Bedrooms  2.5 Full Baths  2 Car Garage  2.0 Stories

First Floor

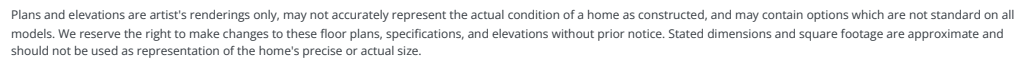


CALL 970-716-6088 TO SCHEDULE A 1 ON 1 APPOINTMENT

Plans and elevations are artist's renderings only, may not accurately represent the actual condition of a home as constructed, and may contain options which are not standard on all models. We reserve the right to make changes to these floor plans, specifications, and elevations without prior notice. Stated dimensions and square footage are approximate and should not be used as representation of the home's precise or actual size.

\$599,185

Second Floor






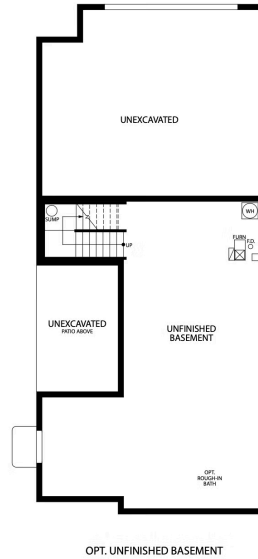
6113 Saddle Horn, Timnath, CO 80547

Community: Trailside Alley Load - Single Family Homes **Floor Plan:** Galine

\$599,185

 2,785 Finished Sq Ft.  3 Bedrooms  2.5 Full Baths  2 Car Garage  2.0 Stories

Unfinished Basement



CALL 970-716-6088 TO SCHEDULE A 1 ON 1 APPOINTMENT

Plans and elevations are artist's renderings only, may not accurately represent the actual condition of a home as constructed, and may contain options which are not standard on all models. We reserve the right to make changes to these floor plans, specifications, and elevations without prior notice. Stated dimensions and square footage are approximate and should not be used as representation of the home's precise or actual size.