



6108 Dutch Dr., Timnath, CO 80547

Community: Trailside Alley Load - Single Family Homes **Floor Plan:** Galileo

\$574,605

2,028 Finished Sq Ft. 3 Bedrooms 2.5 Full Baths 2.5 Car Garage 2.0 Stories



****Estimated Completion Date: March/ April 2025****

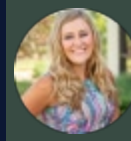
This Galileo floorplan at Trailside features 3 bedrooms, 2.5 bathrooms, a loft, and an attached 2.5-car garage.

The interior of this home will come finished with Eucalyptus (painted) traditional cabinets with matte black bar pulls, Home Chef Appliance package with gas range and microwave/hood combination, Desert Silver quartz countertops in kitchen and Miami White quartz countertops in baths, Silver Dollar vinyl plank flooring, Mesquite Falls Sterling carpet, Stainless Steel plumbing fixtures and door levers, 4x16 white subway backsplash, 12x24 Bone tile in Primary Bath shower. This home is built on a crawl space.

Photos are from a completed home of the same floor plan, therefore finishes depicted may differ from those outlined below.

CALL 970-716-6088 TO SCHEDULE A 1 ON 1 APPOINTMENT

Plans and elevations are artist's renderings only, may not accurately represent the actual condition of a home as constructed, and may contain options which are not standard on all models. We reserve the right to make changes to these floor plans, specifications, and elevations without prior notice. Stated dimensions and square footage are approximate and should not be used as representation of the home's precise or actual size.



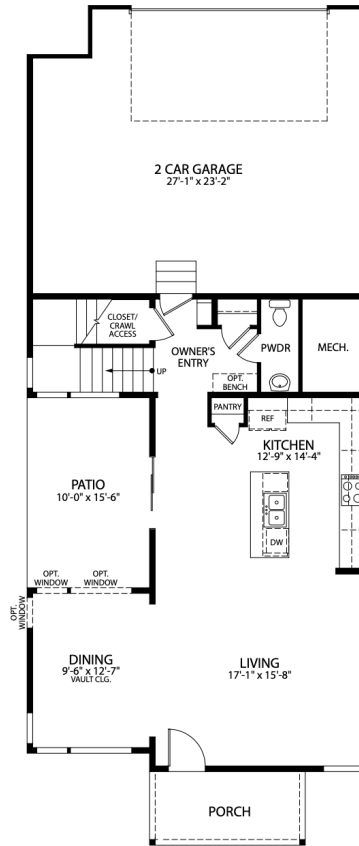
6108 Dutch Dr., Timnath, CO 80547

Community: Trailside Alley Load - Single Family Homes **Floor Plan:** Galileo

\$574,605

2,028 Finished Sq Ft. 3 Bedrooms 2.5 Full Baths 2.5 Car Garage 2.0 Stories

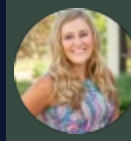
First Floor



FIRST FLOOR

CALL 970-716-6088 TO SCHEDULE A 1 ON 1 APPOINTMENT

Plans and elevations are artist's renderings only, may not accurately represent the actual condition of a home as constructed, and may contain options which are not standard on all models. We reserve the right to make changes to these floor plans, specifications, and elevations without prior notice. Stated dimensions and square footage are approximate and should not be used as representation of the home's precise or actual size.



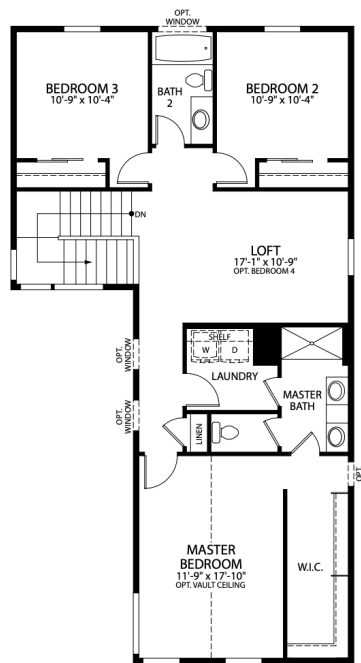
6108 Dutch Dr., Timnath, CO 80547

Community: Trailside Alley Load - Single Family Homes **Floor Plan:** Galileo

\$574,605

2,028 Finished Sq Ft. 3 Bedrooms 2.5 Full Baths 2.5 Car Garage 2.0 Stories

Second Floor



SECOND FLOOR

CALL 970-716-6088 TO SCHEDULE A 1 ON 1 APPOINTMENT

Plans and elevations are artist's renderings only, may not accurately represent the actual condition of a home as constructed, and may contain options which are not standard on all models. We reserve the right to make changes to these floor plans, specifications, and elevations without prior notice. Stated dimensions and square footage are approximate and should not be used as representation of the home's precise or actual size.