





Copperhead

Community: Timnath Ranch Townhomes

 1,623 Finished Sq Ft.  3 Bedrooms  2.5 Full Baths  2 Car Garage



ELEVATION 1



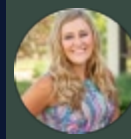
ELEVATION 2

The Copperhead Plan

Discover the Copperhead Townhome in our Timnath Ranch community. Featuring 3 spacious bedrooms, 2 full bathrooms, and a convenient powder bathroom on the main floor, this space is perfect for entertaining and privacy alike. Enjoy an open-concept design that connects the living, dining, and kitchen areas, with a fenced front yard for you and your pup to enjoy. Perfect for both small families and retirees - You'll love calling the Copperhead home. This is an end unit.

CALL 970-716-6088 TO SCHEDULE A 1 ON 1 APPOINTMENT

Plans and elevations are artist's renderings only, may not accurately represent the actual condition of a home as constructed, and may contain options which are not standard on all models. We reserve the right to make changes to these floor plans, specifications, and elevations without prior notice. Stated dimensions and square footage are approximate and should not be used as representation of the home's precise or actual size.

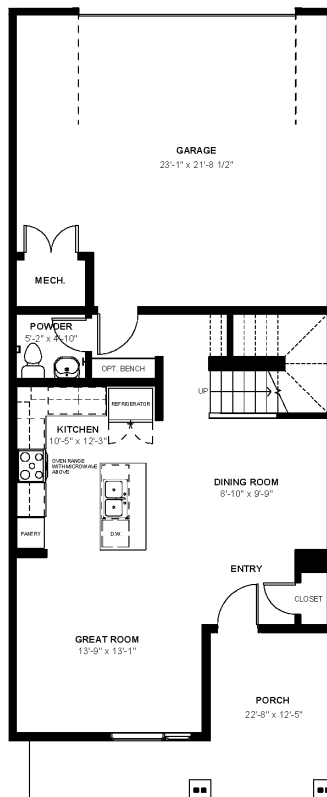


Copperhead

Community: Timnath Ranch Townhomes

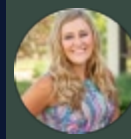
1,623 Finished Sq Ft. 3 Bedrooms 2.5 Full Baths 2 Car Garage

Craftsman First Floor



CALL 970-716-6088 TO SCHEDULE A 1 ON 1 APPOINTMENT

Plans and elevations are artist's renderings only, may not accurately represent the actual condition of a home as constructed, and may contain options which are not standard on all models. We reserve the right to make changes to these floor plans, specifications, and elevations without prior notice. Stated dimensions and square footage are approximate and should not be used as representation of the home's precise or actual size.

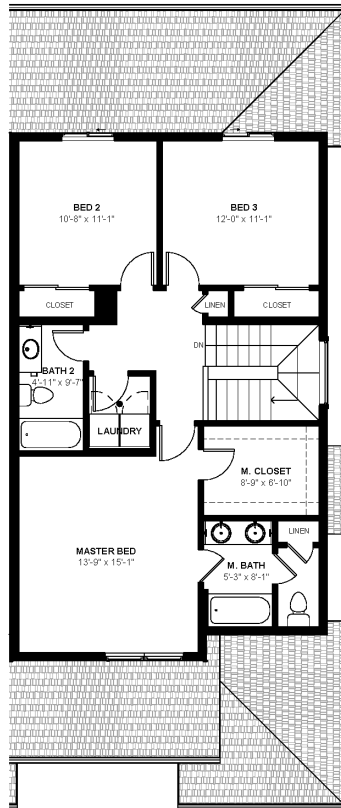


Copperhead

Community: Timnath Ranch Townhomes

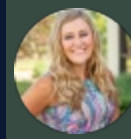
1,623 Finished Sq Ft. 3 Bedrooms 2.5 Full Baths 2 Car Garage

Craftsman Second Floor



CALL 970-716-6088 TO SCHEDULE A 1 ON 1 APPOINTMENT

Plans and elevations are artist's renderings only, may not accurately represent the actual condition of a home as constructed, and may contain options which are not standard on all models. We reserve the right to make changes to these floor plans, specifications, and elevations without prior notice. Stated dimensions and square footage are approximate and should not be used as representation of the home's precise or actual size.

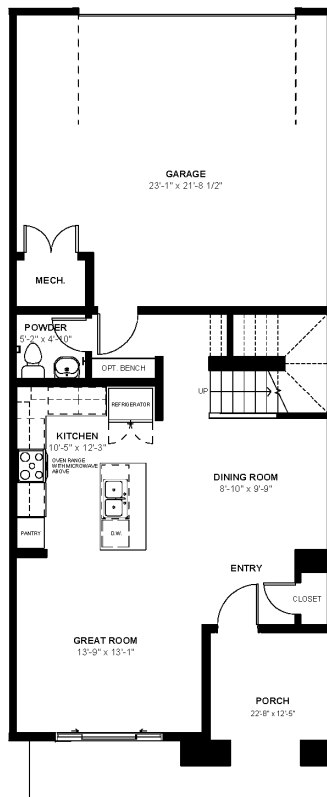


Copperhead

Community: Timnath Ranch Townhomes

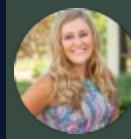
1,623 Finished Sq Ft. 3 Bedrooms 2.5 Full Baths 2 Car Garage

Prairie First Floor



CALL 970-716-6088 TO SCHEDULE A 1 ON 1 APPOINTMENT

Plans and elevations are artist's renderings only, may not accurately represent the actual condition of a home as constructed, and may contain options which are not standard on all models. We reserve the right to make changes to these floor plans, specifications, and elevations without prior notice. Stated dimensions and square footage are approximate and should not be used as representation of the home's precise or actual size.

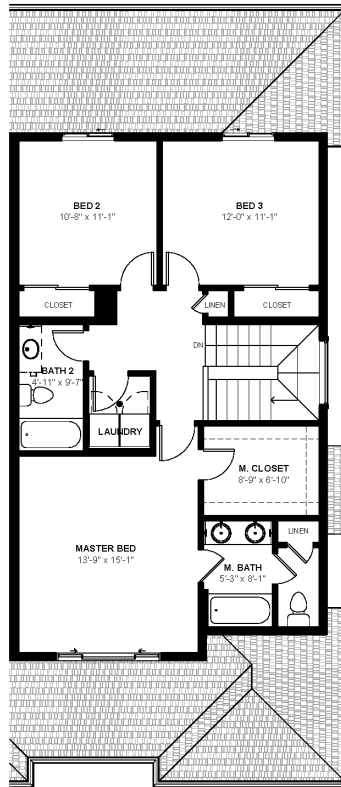


Copperhead

Community: Timnath Ranch Townhomes

1,623 Finished Sq Ft. 3 Bedrooms 2.5 Full Baths 2 Car Garage

Prairie Second Floor



CALL 970-716-6088 TO SCHEDULE A 1 ON 1 APPOINTMENT

Plans and elevations are artist's renderings only, may not accurately represent the actual condition of a home as constructed, and may contain options which are not standard on all models. We reserve the right to make changes to these floor plans, specifications, and elevations without prior notice. Stated dimensions and square footage are approximate and should not be used as representation of the home's precise or actual size.