







6951 Stonebrook Dr., Timnath, CO 80547

**Community:** Timnath Ranch Townhomes **Floor Plan:** Copperhead

**\$462,500**

 1,623 Finished Sq Ft.  3 Bedrooms  2.5 Full Baths  2 Car Garage



**Contract before November 31st and customize your finishes for this home!**

**\*\*Price of this home is the base price - Total purchase price will be depended on finishes selected\*\***

Discover the Copperhead Townhome in our Timnath Ranch community. Featuring 3 spacious bedrooms, 2 full bathrooms, and a convenient powder bathroom on the main floor, this space is perfect for entertaining and privacy alike. Enjoy an open-concept design that connects the living, dining, and kitchen areas, with a fenced front yard for you and your pup to enjoy. Perfect for both small families and retirees - You'll love calling the Copperhead home. This is an end unit.

Photos are from a completed home of the same floor plan, therefore finishes depicted may differ from those outlined below.

**CALL 970-716-6088 TO SCHEDULE A 1 ON 1 APPOINTMENT**

Plans and elevations are artist's renderings only, may not accurately represent the actual condition of a home as constructed, and may contain options which are not standard on all models. We reserve the right to make changes to these floor plans, specifications, and elevations without prior notice. Stated dimensions and square footage are approximate and should not be used as representation of the home's precise or actual size.



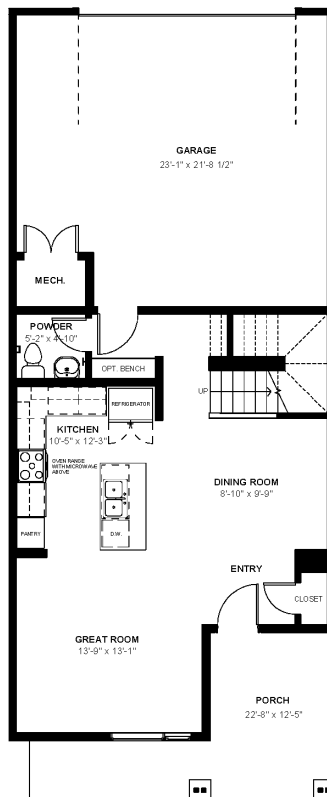
6951 Stonebrook Dr., Timnath, CO 80547

**Community:** Timnath Ranch Townhomes **Floor Plan:** Copperhead

**\$462,500**

1,623 Finished Sq Ft. 3 Bedrooms 2.5 Full Baths 2 Car Garage

## Craftsman First Floor



CALL 970-716-6088 TO SCHEDULE A 1 ON 1 APPOINTMENT

Plans and elevations are artist's renderings only, may not accurately represent the actual condition of a home as constructed, and may contain options which are not standard on all models. We reserve the right to make changes to these floor plans, specifications, and elevations without prior notice. Stated dimensions and square footage are approximate and should not be used as representation of the home's precise or actual size.



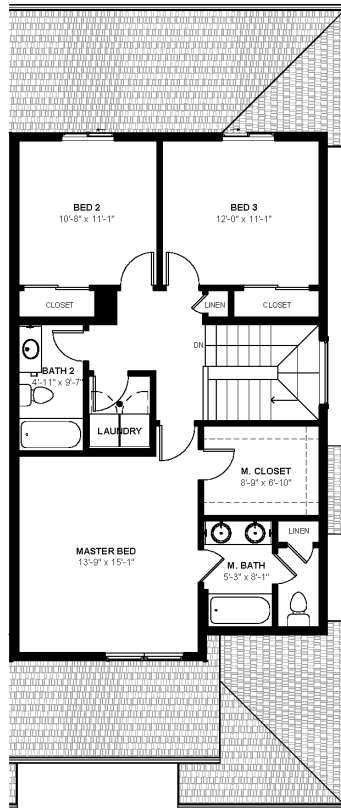
6951 Stonebrook Dr., Timnath, CO 80547

**Community:** Timnath Ranch Townhomes **Floor Plan:** Copperhead

**\$462,500**

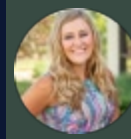
1,623 Finished Sq Ft. 3 Bedrooms 2.5 Full Baths 2 Car Garage

## Craftsman Second Floor



CALL 970-716-6088 TO SCHEDULE A 1 ON 1 APPOINTMENT

Plans and elevations are artist's renderings only, may not accurately represent the actual condition of a home as constructed, and may contain options which are not standard on all models. We reserve the right to make changes to these floor plans, specifications, and elevations without prior notice. Stated dimensions and square footage are approximate and should not be used as representation of the home's precise or actual size.



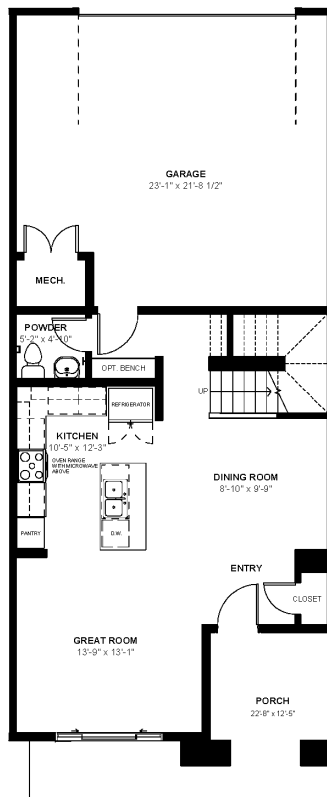
6951 Stonebrook Dr., Timnath, CO 80547

**Community:** Timnath Ranch Townhomes **Floor Plan:** Copperhead

**\$462,500**

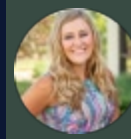
1,623 Finished Sq Ft. 3 Bedrooms 2.5 Full Baths 2 Car Garage

## Prairie First Floor



CALL 970-716-6088 TO SCHEDULE A 1 ON 1 APPOINTMENT

Plans and elevations are artist's renderings only, may not accurately represent the actual condition of a home as constructed, and may contain options which are not standard on all models. We reserve the right to make changes to these floor plans, specifications, and elevations without prior notice. Stated dimensions and square footage are approximate and should not be used as representation of the home's precise or actual size.



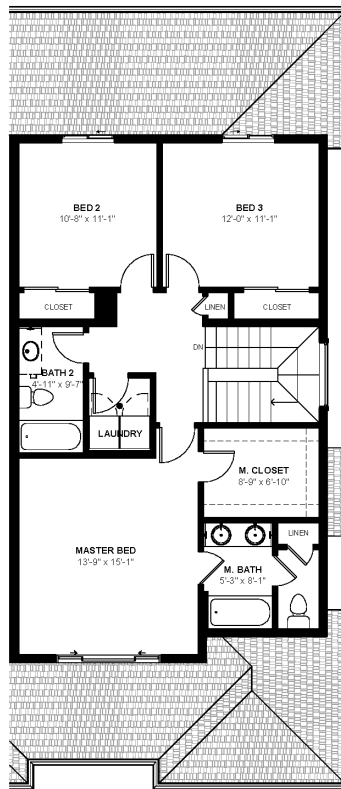
6951 Stonebrook Dr., Timnath, CO 80547

**Community:** Timnath Ranch Townhomes **Floor Plan:** Copperhead

**\$462,500**

1,623 Finished Sq Ft. 3 Bedrooms 2.5 Full Baths 2 Car Garage

## Prairie Second Floor



CALL 970-716-6088 TO SCHEDULE A 1 ON 1 APPOINTMENT

Plans and elevations are artist's renderings only, may not accurately represent the actual condition of a home as constructed, and may contain options which are not standard on all models. We reserve the right to make changes to these floor plans, specifications, and elevations without prior notice. Stated dimensions and square footage are approximate and should not be used as representation of the home's precise or actual size.