



1621 Alfalfa Ln., Johnstown, CO 80534

Community: Granary **Floor Plan:** Oakley

\$602,085

3,038 Finished Sq Ft. 4 Bedrooms 4.0 Full Baths 2 Car Garage 2.0 Stories



****Estimated Completion Date: December 2024****

This home qualifies for our current incentive options: a locked 30-year interest rate as low as 4.65% + \$5,000 off closing costs OR up to \$35,000 in flex cash - Call or text Kendall for more information: [970-716-6088](tel:970-716-6088). Buyer must contract by August 31st and close by December 2024.

Say hello to our newest floorplan, the Oakley! With 4 bedrooms, a loft, and an office/flex space, you will have plenty of new home to explore and enjoy!

This home will be finished with Biscotti stained cabinets, Home Chef Gas Appliance package, Salina (marble-look) quartz throughout, Silver Dollar vinyl plank flooring, Matte Black door levers & faucets.

Photos are of a previously completed home, therefore finishes may be different in the actual home.

CALL 970-716-6088 TO SCHEDULE A 1 ON 1 APPOINTMENT

Plans and elevations are artist's renderings only, may not accurately represent the actual condition of a home as constructed, and may contain options which are not standard on all models. We reserve the right to make changes to these floor plans, specifications, and elevations without prior notice. Stated dimensions and square footage are approximate and should not be used as representation of the home's precise or actual size.

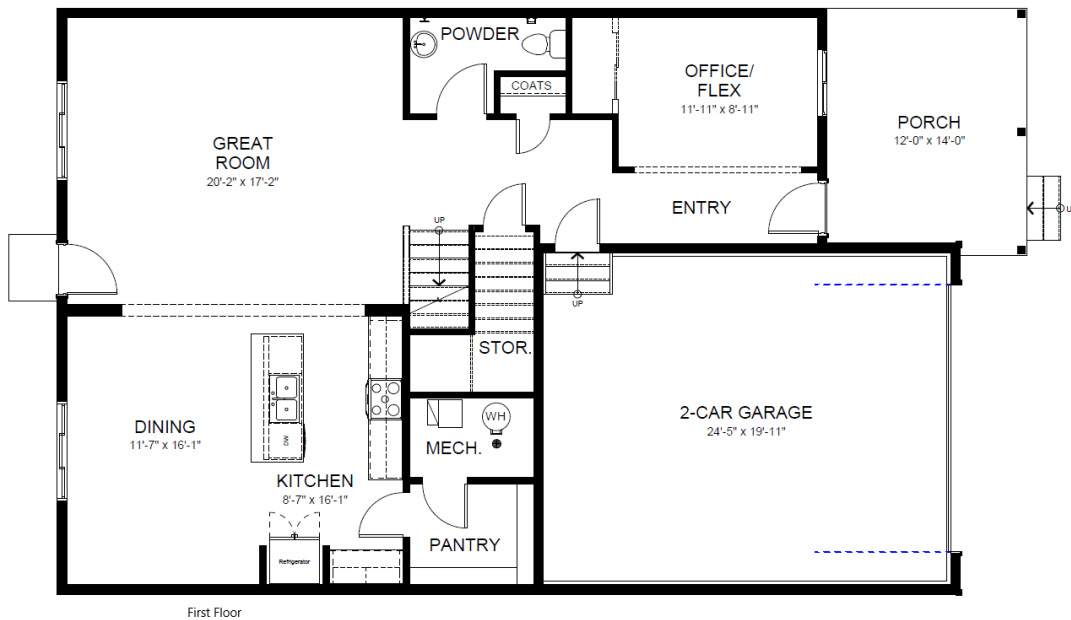


1621 Alfalfa Ln., Johnstown, CO 80534

Community: Granary Floor Plan: Oakley

\$602,085

3,038 Finished Sq Ft. 4 Bedrooms 4.0 Full Baths 2 Car Garage 2.0 Stories



First Floor

CALL 970-716-6088 TO SCHEDULE A 1 ON 1 APPOINTMENT

Plans and elevations are artist's renderings only, may not accurately represent the actual condition of a home as constructed, and may contain options which are not standard on all models. We reserve the right to make changes to these floor plans, specifications, and elevations without prior notice. Stated dimensions and square footage are approximate and should not be used as representation of the home's precise or actual size.

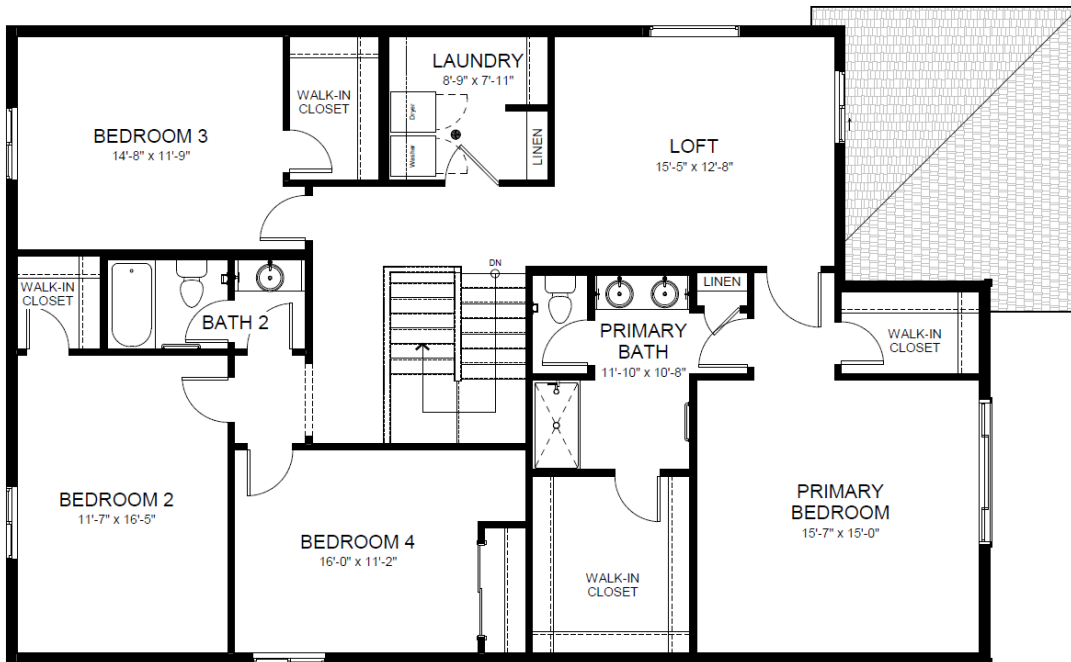


1621 Alfalfa Ln., Johnstown, CO 80534

Community: Granary Floor Plan: Oakley

\$602,085

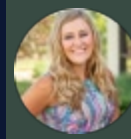
3,038 Finished Sq Ft. 4 Bedrooms 4.0 Full Baths 2 Car Garage 2.0 Stories



Second Floor

CALL 970-716-6088 TO SCHEDULE A 1 ON 1 APPOINTMENT

Plans and elevations are artist's renderings only, may not accurately represent the actual condition of a home as constructed, and may contain options which are not standard on all models. We reserve the right to make changes to these floor plans, specifications, and elevations without prior notice. Stated dimensions and square footage are approximate and should not be used as representation of the home's precise or actual size.



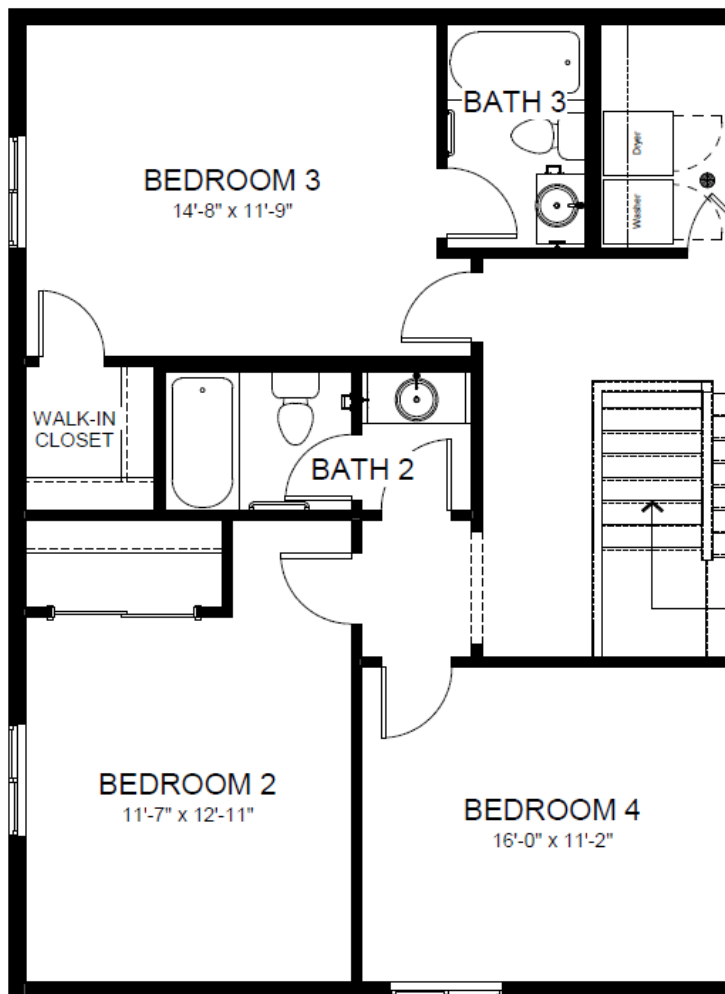
1621 Alfalfa Ln., Johnstown, CO 80534

Community: Granary Floor Plan: Oakley

3,038 Finished Sq Ft. 4 Bedrooms 4.0 Full Baths 2 Car Garage 2.0 Stories

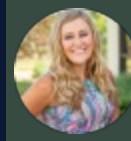
\$602,085

opt. Second floor



CALL 970-716-6088 TO SCHEDULE A 1 ON 1 APPOINTMENT

Plans and elevations are artist's renderings only, may not accurately represent the actual condition of a home as constructed, and may contain options which are not standard on all models. We reserve the right to make changes to these floor plans, specifications, and elevations without prior notice. Stated dimensions and square footage are approximate and should not be used as representation of the home's precise or actual size.



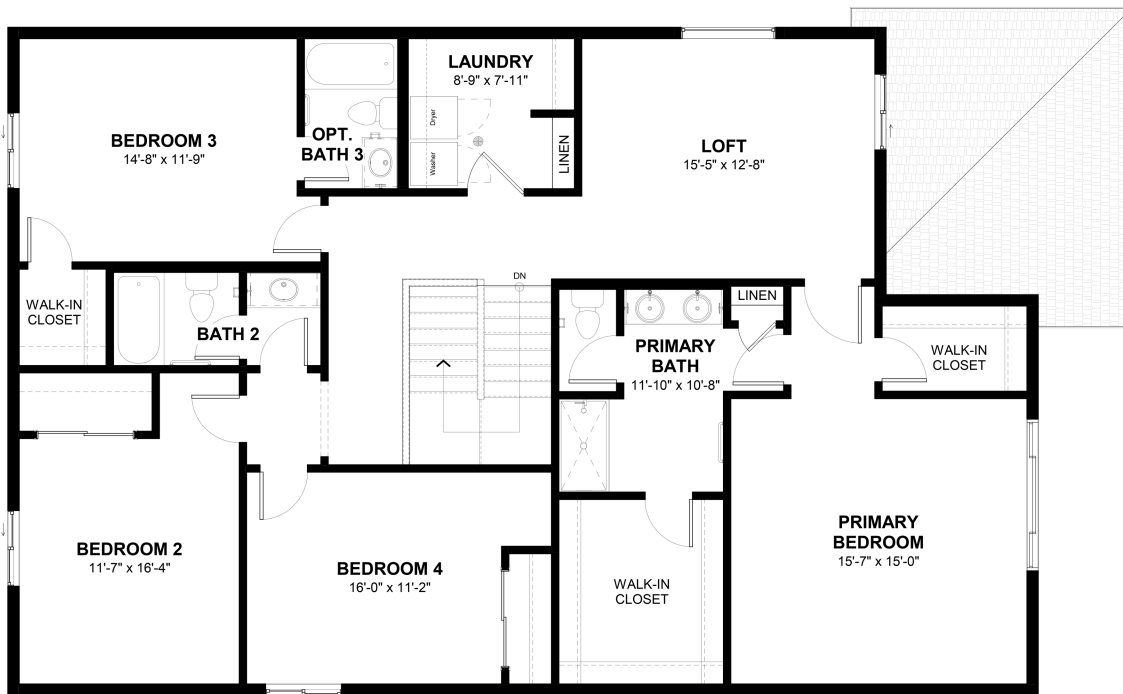
1621 Alfalfa Ln., Johnstown, CO 80534

Community: Granary Floor Plan: Oakley

\$602,085

3,038 Finished Sq Ft. 4 Bedrooms 4.0 Full Baths 2 Car Garage 2.0 Stories

3 bath



OPT. SECOND FLOOR

CALL 970-716-6088 TO SCHEDULE A 1 ON 1 APPOINTMENT

Plans and elevations are artist's renderings only, may not accurately represent the actual condition of a home as constructed, and may contain options which are not standard on all models. We reserve the right to make changes to these floor plans, specifications, and elevations without prior notice. Stated dimensions and square footage are approximate and should not be used as representation of the home's precise or actual size.