

1580 Alfalfa Ln., Johnstown, CO 80534

Community: Granary **Floor Plan:** Armstrong

\$513,470

 1,779 Finished Sq Ft.  3 Bedrooms  2.0 Full Baths  2 Car Garage  1.0 Stories



****Estimated Completion Date: October 2024 ****

This home qualifies for our current incentive options: a locked 30-year interest rate as low as 4.65% + \$5,000 off closing costs OR up to \$35,000 in flex cash - Call or text Kendall for more information: [970-716-6088](tel:970-716-6088). Buyer must contract by August 31st and close by December 2024.

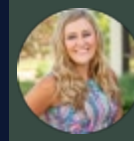
Say hello to the Armstrong, from our newest collection! Perfect for families of all types.

This home will be finished with Eucalyptus painted cabinets, Home Chef Gas Appliance package, Marina (marble look) quartz throughout, Wild Dunes (warm/neutral) vinyl plank flooring, Matte Black door levers & faucets, hard surface throughout (no carpet). **This home is on a corner lot!**

Photos are of a previously completed home, therefore finishes may be different in the actual home.

CALL 970-716-6088 TO SCHEDULE A 1 ON 1 APPOINTMENT

Plans and elevations are artist's renderings only, may not accurately represent the actual condition of a home as constructed, and may contain options which are not standard on all models. We reserve the right to make changes to these floor plans, specifications, and elevations without prior notice. Stated dimensions and square footage are approximate and should not be used as representation of the home's precise or actual size.

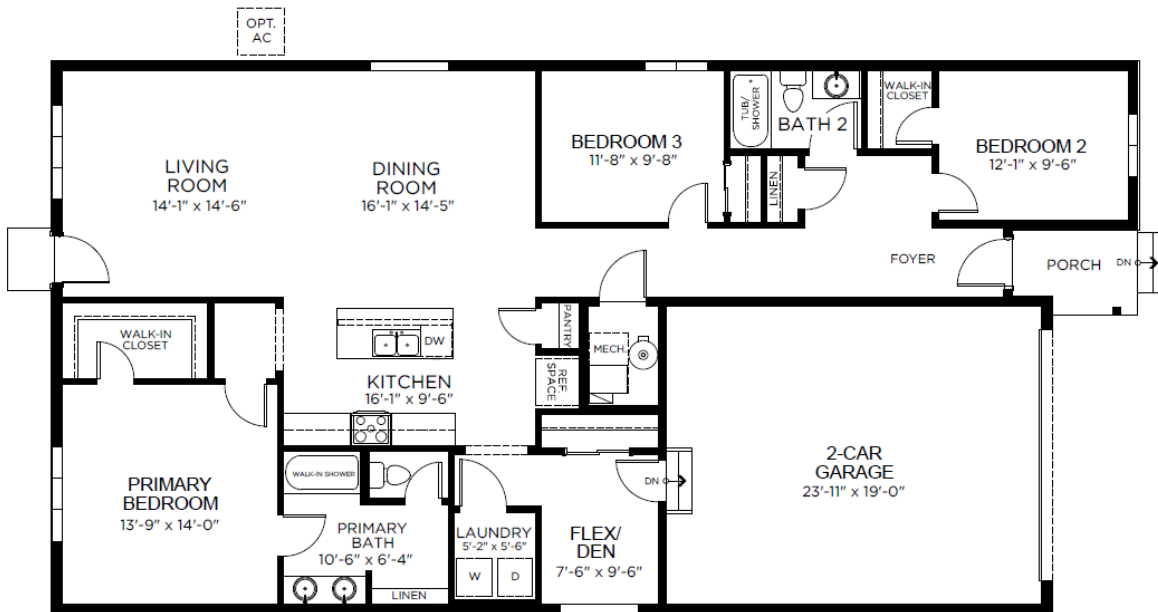


1580 Alfalfa Ln., Johnstown, CO 80534

Community: Granary **Floor Plan:** Armstrong

\$513,470

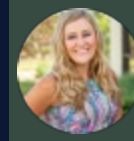
1,779 Finished Sq Ft. 3 Bedrooms 2.0 Full Baths 2 Car Garage 1.0 Stories



FIRST FLOOR

CALL 970-716-6088 TO SCHEDULE A 1 ON 1 APPOINTMENT

Plans and elevations are artist's renderings only, may not accurately represent the actual condition of a home as constructed, and may contain options which are not standard on all models. We reserve the right to make changes to these floor plans, specifications, and elevations without prior notice. Stated dimensions and square footage are approximate and should not be used as representation of the home's precise or actual size.

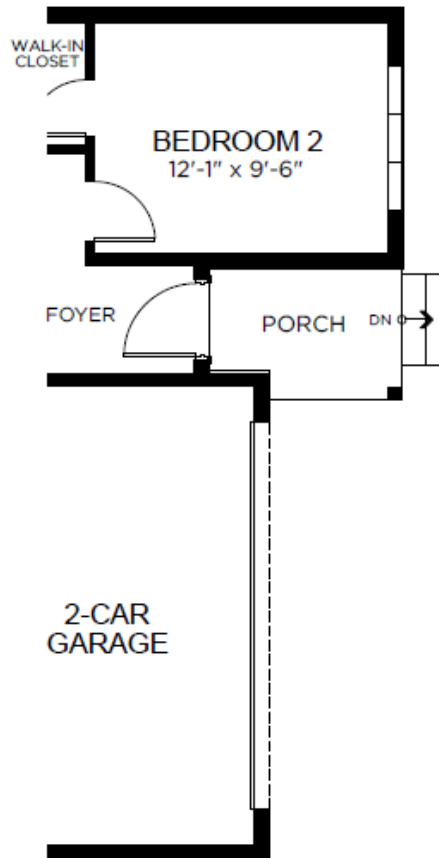


1580 Alfalfa Ln., Johnstown, CO 80534

Community: Granary **Floor Plan:** Armstrong

\$513,470

1,779 Finished Sq Ft. 3 Bedrooms 2.0 Full Baths 2 Car Garage 1.0 Stories



CALL 970-716-6088 TO SCHEDULE A 1 ON 1 APPOINTMENT

Plans and elevations are artist's renderings only, may not accurately represent the actual condition of a home as constructed, and may contain options which are not standard on all models. We reserve the right to make changes to these floor plans, specifications, and elevations without prior notice. Stated dimensions and square footage are approximate and should not be used as representation of the home's precise or actual size.