



704 Galloway, Johnstown, CO 80534

**Community:** Granary Trailblazer Collection - Single Family Homes

**Floor Plan:**

**\$539,035**

 2,288 Finished Sq Ft.  3 Bedrooms  2.5 Full Baths  2 Car Garage  2.0  
Stories



**\*\*MOVE IN READY\*\***

Introducing the Clemens, a stunningly spacious home that combines contemporary elegance with thoughtful design. This floorplan includes 3 sizeable bedrooms, 2 and a half bathrooms, and a large loft that offers endless possibilities for use. The expansive yard provides ample space for outdoor enjoyment with your pup and hosting guests for a grill-out. The Clemens offers a fresh, vibrant setting for your next chapter.

This home is finished with Eucalyptus painted maple cabinetry, Marina Dekton (engineered stone) countertops, 3x6 white subway tile kitchen backsplash, Silver Dollar (light) vinyl plank throughout the main level with upgraded Kindling chevron patterned carpet on the second story. 12x24 Calacatta vinyl floor tile in laundry and bathrooms, black faucets and bathroom accessories. Stainless steel kitchen appliances with gas cooktop. Included refrigerator, washer and dryer!

Photos are of this exact home.

**CALL 970-716-6088 TO SCHEDULE A 1 ON 1 APPOINTMENT**

Plans and elevations are artist's renderings only, may not accurately represent the actual condition of a home as constructed, and may contain options which are not standard on all models. We reserve the right to make changes to these floor plans, specifications, and elevations without prior notice. Stated dimensions and square footage are approximate and should not be used as representation of the home's precise or actual size.



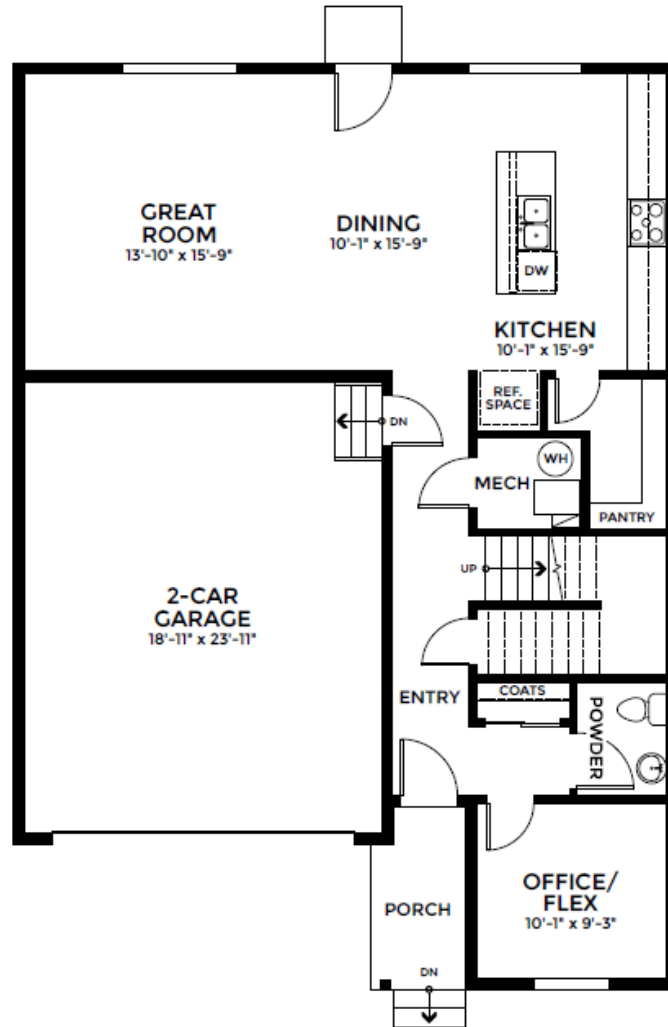
704 Galloway, Johnstown, CO 80534

**Community:** Granary Trailblazer Collection - Single Family Homes

**Floor Plan**

**\$539,035**

2,288 Finished Sq Ft. 
 3 Bedrooms 
 2.5 Full Baths 
 2 Car Garage 
 2.0 Stories



FIRST FLOOR

**CALL 970-716-6088 TO SCHEDULE A 1 ON 1 APPOINTMENT**

Plans and elevations are artist's renderings only, may not accurately represent the actual condition of a home as constructed, and may contain options which are not standard on all models. We reserve the right to make changes to these floor plans, specifications, and elevations without prior notice. Stated dimensions and square footage are approximate and should not be used as representation of the home's precise or actual size.