



1650 Alfalfa, Johnstown, CO 80534

**Community:** Granary Trailblazer Collection - Single Family Homes **Floor:**

**\$506,065**

 1,779 Finished Sq Ft.  3 Bedrooms  2.5 Full Baths  2 Car Garage  1.0 Stories



The Clemens is one of our most versatile floorplans - It has something for everyone! You will love the openness of the main floor, with it's large living area that feeds right into the dining and kitchen areas. Upstairs has 3 generous sized bedrooms (all boasting walk in closets) and a loft, perfect for playing games, watching movies, working out, or turning it into an extra office area.

This home will be included with Biscotti-stained maple cabinetry, Desert Silver Dekton (engineered stone) countertops, 3x6 white subway tile kitchen backsplash, Mineral Maple (light neutral) vinyl plank throughout the main level of the home, laundry and bathrooms with upgraded Kindling chevron patterned carpet upstairs, black faucets and bathroom accessories. Stainless steel kitchen appliances with gas cooktop. Included refrigerator, washer and dryer!

Photos are from actual home.

**CALL 970-716-6088 TO SCHEDULE A 1 ON 1 APPOINTMENT**

Plans and elevations are artist's renderings only, may not accurately represent the actual condition of a home as constructed, and may contain options which are not standard on all models. We reserve the right to make changes to these floor plans, specifications, and elevations without prior notice. Stated dimensions and square footage are approximate and should not be used as representation of the home's precise or actual size.



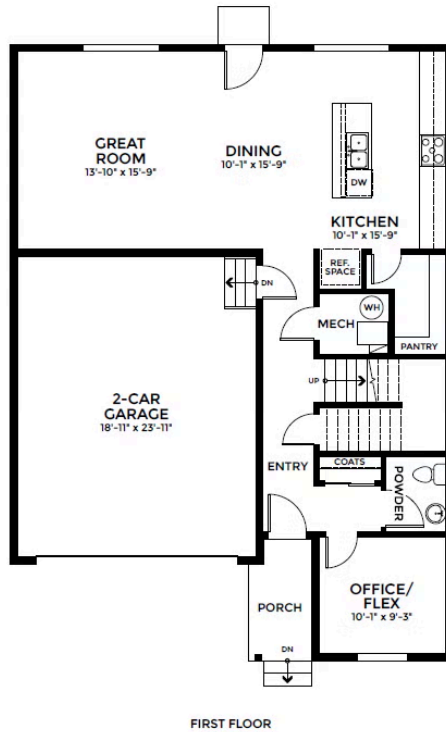
1650 Alfalfa, Johnstown, CO 80534

**Community:** Granary Trailblazer Collection - Single Family Homes

**Floor**

**\$506,065**

1,779 Finished Sq Ft. 3 Bedrooms 2.5 Full Baths 2 Car Garage 1.0 Stories



CALL 970-716-6088 TO SCHEDULE A 1 ON 1 APPOINTMENT


Plans and elevations are artist's renderings only, may not accurately represent the actual condition of a home as constructed, and may contain options which are not standard on all models. We reserve the right to make changes to these floor plans, specifications, and elevations without prior notice. Stated dimensions and square footage are approximate and should not be used as representation of the home's precise or actual size.



1650 Alfalfa, Johnstown, CO 80534

**Community:** Granary Trailblazer Collection - Single Family Homes **Floor**

**\$506,065**

 1,779 Finished Sq Ft.  3 Bedrooms  2.5 Full Baths  2 Car Garage  1.0 Stories



SECOND FLOOR

CALL 970-716-6088 TO SCHEDULE A 1 ON 1 APPOINTMENT

Plans and elevations are artist's renderings only, may not accurately represent the actual condition of a home as constructed, and may contain options which are not standard on all models. We reserve the right to make changes to these floor plans, specifications, and elevations without prior notice. Stated dimensions and square footage are approximate and should not be used as representation of the home's precise or actual size.