

1641 Alfalfa Ln., Johnstown, CO 80534

Community: Granary Trailblazer Collection - Single Family Homes

Floor Plan:

\$495,800

 1,779 Finished Sq Ft.  3 Bedrooms  2.0 Full Baths  2 Car Garage  1.0 Stories



****MOVE-IN READY!****

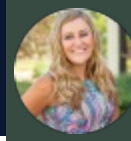
Say hello to the Armstrong, from our newest collection! Perfect for families of all types.

This home will be finished with Chai latte painted maple cabinetry, Salina Dekton (engineered stone) countertops, 3x6 white subway tile kitchen backsplash, Marina (warm/neutral) vinyl plank throughout the home including bedrooms (no carpet), black faucets and bathroom accessories. Dark Grey 12x24 shower tile in master bathroom. Stainless steel kitchen appliances with electric cooktop. Included refrigerator, washer and dryer! **Backs to walking trail and open space!**

Photos are of the actual home!

CALL 970-716-6088 TO SCHEDULE A 1 ON 1 APPOINTMENT

Plans and elevations are artist's renderings only, may not accurately represent the actual condition of a home as constructed, and may contain options which are not standard on all models. We reserve the right to make changes to these floor plans, specifications, and elevations without prior notice. Stated dimensions and square footage are approximate and should not be used as representation of the home's precise or actual size.



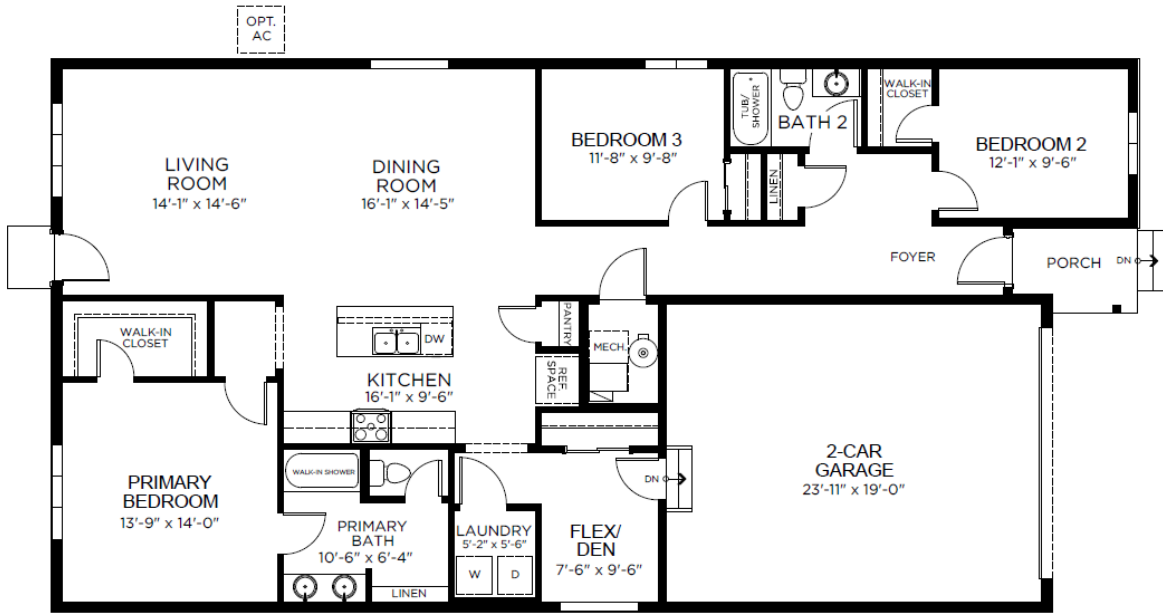
1641 Alfalfa Ln., Johnstown, CO 80534

Community: Granary Trailblazer Collection - Single Family Homes

Floor Plan

\$495,800

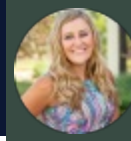
1,779 Finished Sq Ft.
 3 Bedrooms
 2.0 Full Baths
 2 Car Garage
 1.0 Stories



FIRST FLOOR

CALL 970-716-6088 TO SCHEDULE A 1 ON 1 APPOINTMENT

Plans and elevations are artist's renderings only, may not accurately represent the actual condition of a home as constructed, and may contain options which are not standard on all models. We reserve the right to make changes to these floor plans, specifications, and elevations without prior notice. Stated dimensions and square footage are approximate and should not be used as representation of the home's precise or actual size.



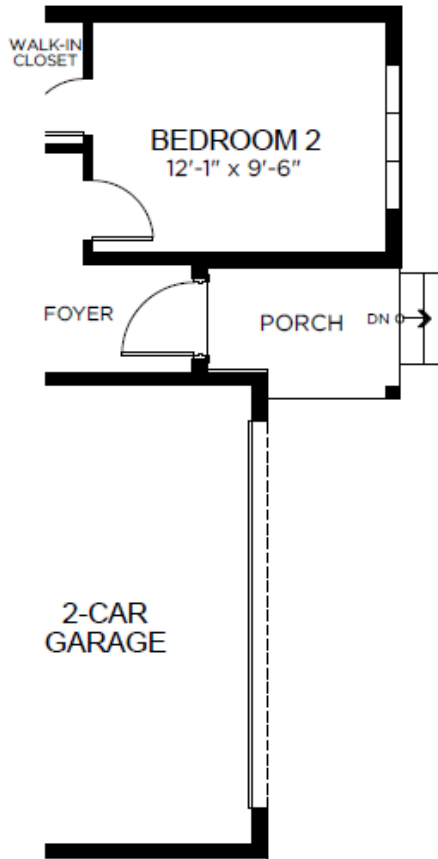
1641 Alfalfa Ln., Johnstown, CO 80534

Community: Granary Trailblazer Collection - Single Family Homes

Floor Plan

\$495,800

1,779 Finished Sq Ft. 3 Bedrooms 2.0 Full Baths 2 Car Garage 1.0 Stories



CALL 970-716-6088 TO SCHEDULE A 1 ON 1 APPOINTMENT

Plans and elevations are artist's renderings only, may not accurately represent the actual condition of a home as constructed, and may contain options which are not standard on all models. We reserve the right to make changes to these floor plans, specifications, and elevations without prior notice. Stated dimensions and square footage are approximate and should not be used as representation of the home's precise or actual size.