



1620 Alfalfa Lane, Johnstown, CO 80534

Community: Granary Trailblazer Collection - Single Family Homes

Floor

\$502,250

 1,779 Finished Sq Ft.  3 Bedrooms  2.0 Full Baths  2 Car Garage  1.0 Stories

MOVE-IN READY



Whether you're downsizing or searching for the perfect first home, this charming ranch-style residence has something for everyone. The extra-deep garage offers ample room for your full-sized truck, custom built-ins, and even space to comfortably open your doors—no tight squeeze here! A versatile bonus room just off the garage provides endless possibilities—use it as a spacious mudroom, a productive home office, or a creative studio. Inside, the open-concept floorplan is ideal for entertaining and everyday living, allowing you to stay connected with guests and family. Large windows at the back end of the house and master bedroom bring in natural light and showcase stunning views of the neighboring park, sprawling green space, and even a view of Longs Peak. Stylish finishes include crisp white cabinetry, black faucets and hardware, light neutral flooring in the main living areas, and plush upgraded carpet in the bedrooms—creating a fresh, modern feel throughout.

Backs to open space! Photos are from this home.

CALL 970-716-6088 TO SCHEDULE A 1 ON 1 APPOINTMENT

Plans and elevations are artist's renderings only, may not accurately represent the actual condition of a home as constructed, and may contain options which are not standard on all models. We reserve the right to make changes to these floor plans, specifications, and elevations without prior notice. Stated dimensions and square footage are approximate and should not be used as representation of the home's precise or actual size.



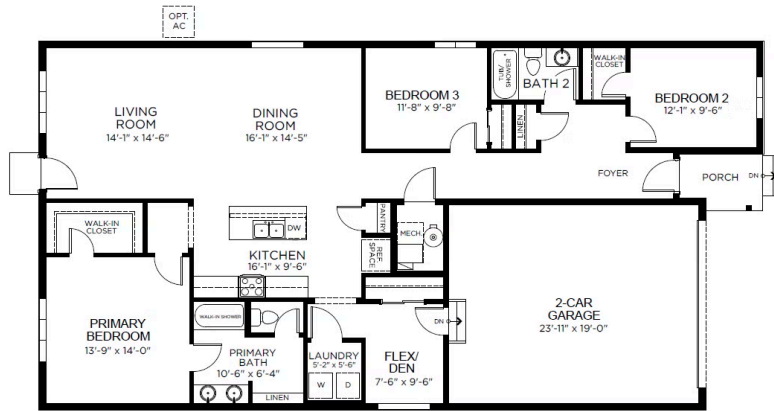
1620 Alfalfa Lane, Johnstown, CO 80534

Community: Granary Trailblazer Collection - Single Family Homes

Floor

\$502,250

1,779 Finished Sq Ft. 3 Bedrooms 2.0 Full Baths 2 Car Garage 1.0 Stories



FIRST FLOOR

CALL 970-716-6088 TO SCHEDULE A 1 ON 1 APPOINTMENT

Plans and elevations are artist's renderings only, may not accurately represent the actual condition of a home as constructed, and may contain options which are not standard on all models. We reserve the right to make changes to these floor plans, specifications, and elevations without prior notice. Stated dimensions and square footage are approximate and should not be used as representation of the home's precise or actual size.



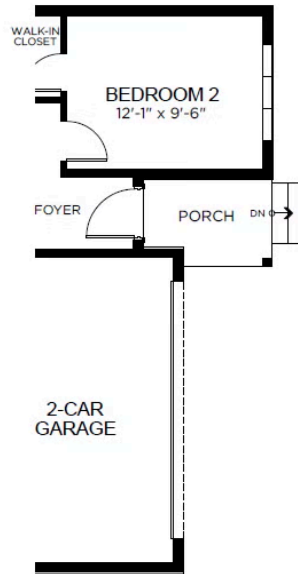
1620 Alfalfa Lane, Johnstown, CO 80534

Community: Granary Trailblazer Collection - Single Family Homes

Floor

\$502,250

 1,779 Finished Sq Ft.  3 Bedrooms  2.0 Full Baths  2 Car Garage  1.0 Stories



CALL 970-716-6088 TO SCHEDULE A 1 ON 1 APPOINTMENT

Plans and elevations are artist's renderings only, may not accurately represent the actual condition of a home as constructed, and may contain options which are not standard on all models. We reserve the right to make changes to these floor plans, specifications, and elevations without prior notice. Stated dimensions and square footage are approximate and should not be used as representation of the home's precise or actual size.







1620 Alfalfa Lane, Johnstown, CO 80534

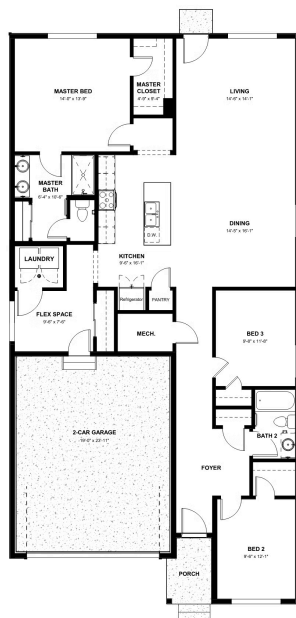
Community: Granary Trailblazer Collection - Single Family Homes

Floor

\$502,250

 1,779 Finished Sq Ft.  3 Bedrooms  2.0 Full Baths  2 Car Garage  1.0 Stories

12.19.24



CALL 970-716-6088 TO SCHEDULE A 1 ON 1 APPOINTMENT

Plans and elevations are artist's renderings only, may not accurately represent the actual condition of a home as constructed, and may contain options which are not standard on all models. We reserve the right to make changes to these floor plans, specifications, and elevations without prior notice. Stated dimensions and square footage are approximate and should not be used as representation of the home's precise or actual size.