

1601 Alfalfa Ln., Johnstown, CO 80534

Community: Granary Trailblazer Collection - Single Family Homes**Floor Plan:****\$483,650** 1,779 Finished Sq Ft.  3 Bedrooms  2.0 Full Baths  2 Car Garage  1.0 Stories****MOVE-IN READY!****

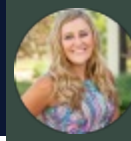
Welcome to the Armstrong, a charming new home that combines modern comforts with classic appeal. This thoughtfully designed floorplan features 3 spacious bedrooms and 2 full bathrooms, offering a perfect blend of functionality and style. Enjoy the outdoors in your private yard, ideal for relaxation or play. This home promises a fresh start in a vibrant, growing neighborhood. **This home is physically staged - Come see how it lives!**

This home will be finished with Chai latte painted maple cabinetry, Grey Expo quartz countertops, 3x6 white subway tile kitchen backsplash, Wild Dunes (warm) vinyl plank throughout the home with upgraded Kindling chevron patterned carpet in bedrooms, 12x24 Calacatta vinyl floor tile in laundry and bathrooms, black faucets and bathroom accessories. Stainless steel kitchen appliances with gas cooktop. Included refrigerator, washer and dryer! **Backs to walking trail and open space!**

Photos are of the actual home!

CALL 970-716-6088 TO SCHEDULE A 1 ON 1 APPOINTMENT

Plans and elevations are artist's renderings only, may not accurately represent the actual condition of a home as constructed, and may contain options which are not standard on all models. We reserve the right to make changes to these floor plans, specifications, and elevations without prior notice. Stated dimensions and square footage are approximate and should not be used as representation of the home's precise or actual size.



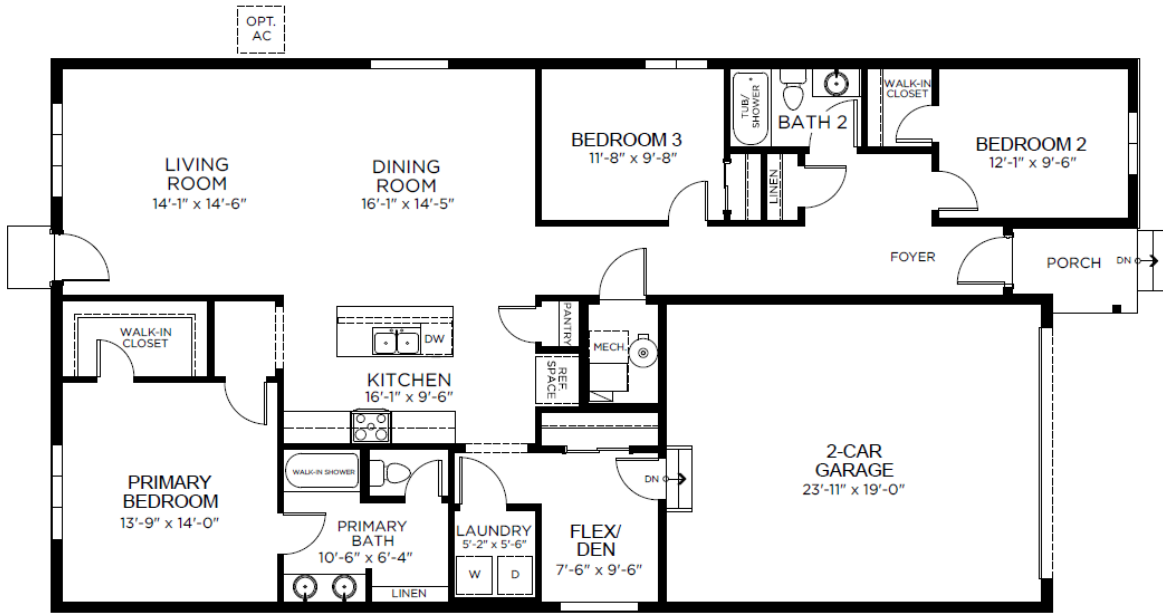
1601 Alfalfa Ln., Johnstown, CO 80534

Community: Granary Trailblazer Collection - Single Family Homes

Floor Plan

\$483,650

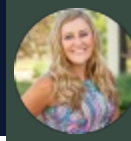
1,779 Finished Sq Ft.
 3 Bedrooms
 2.0 Full Baths
 2 Car Garage
 1.0 Stories



FIRST FLOOR

CALL 970-716-6088 TO SCHEDULE A 1 ON 1 APPOINTMENT

Plans and elevations are artist's renderings only, may not accurately represent the actual condition of a home as constructed, and may contain options which are not standard on all models. We reserve the right to make changes to these floor plans, specifications, and elevations without prior notice. Stated dimensions and square footage are approximate and should not be used as representation of the home's precise or actual size.



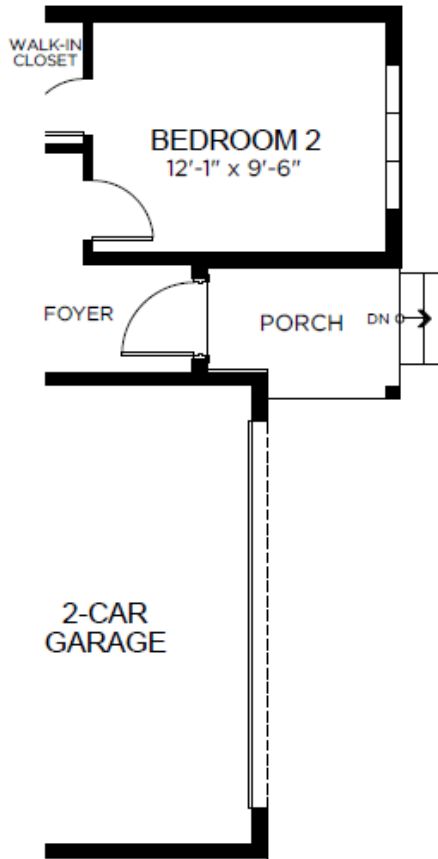
1601 Alfalfa Ln., Johnstown, CO 80534

Community: Granary Trailblazer Collection - Single Family Homes

Floor Plan

\$483,650

1,779 Finished Sq Ft. 3 Bedrooms 2.0 Full Baths 2 Car Garage 1.0 Stories



CALL 970-716-6088 TO SCHEDULE A 1 ON 1 APPOINTMENT

Plans and elevations are artist's renderings only, may not accurately represent the actual condition of a home as constructed, and may contain options which are not standard on all models. We reserve the right to make changes to these floor plans, specifications, and elevations without prior notice. Stated dimensions and square footage are approximate and should not be used as representation of the home's precise or actual size.