



1590 Alfalfa, Johnstown, CO 80534

Community: Granary Trailblazer Collection - Single Family Homes

Floor Plan:

\$529,090

 2,288 Finished Sq Ft.  3 Bedrooms  2.5 Full Baths  2 Car Garage  2.0
Stories



****Estimated Completion Date: Feb/March 2025****

Introducing the Clemens, a stunningly spacious home that combines contemporary elegance with thoughtful design. This floorplan includes 3 sizeable bedrooms, 2 and a half bathrooms, and an office space and large loft that offers endless possibilities for use. The expansive yard provides ample space for outdoor enjoyment with your pup and hosting guests for a grill-out. The Clemens offers a fresh, vibrant setting for your next chapter.

This home will be finished with Eucalyptus painted maple cabinetry, Laguna Dekton (engineered stone) countertops, 3x6 white subway tile kitchen backsplash, Mineral Maple (light) vinyl plank throughout the main level of the home, laundry and bathrooms with upgraded Fallen Acorn chevron patterned carpet on the second story, black faucets and bathroom accessories. Stainless steel kitchen appliances with gas cooktop. Included refrigerator, washer and dryer!

Photos are from a completed home of the same floor plan, therefore finishes depicted may differ from those outlined below.

CALL 970-716-6088 TO SCHEDULE A 1 ON 1 APPOINTMENT

Plans and elevations are artist's renderings only, may not accurately represent the actual condition of a home as constructed, and may contain options which are not standard on all models. We reserve the right to make changes to these floor plans, specifications, and elevations without prior notice. Stated dimensions and square footage are approximate and should not be used as representation of the home's precise or actual size.



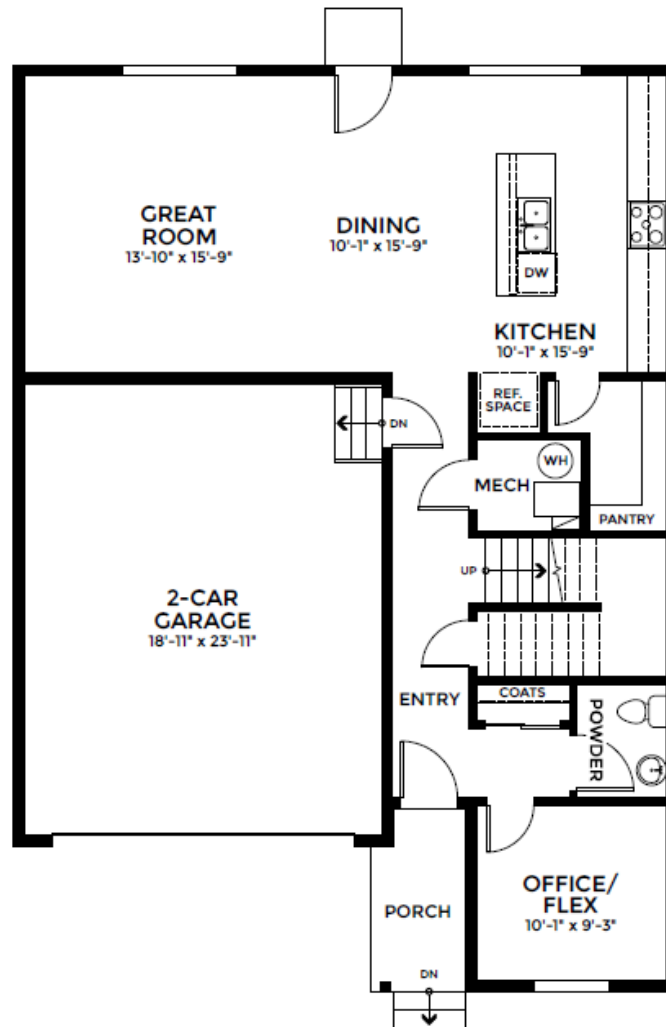
1590 Alfalfa, Johnstown, CO 80534

Community: Granary Trailblazer Collection - Single Family Homes

Floor Plan

\$529,090

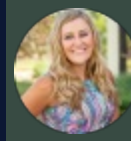
2,288 Finished Sq Ft. 3 Bedrooms 2.5 Full Baths 2 Car Garage 2.0 Stories



FIRST FLOOR

CALL 970-716-6088 TO SCHEDULE A 1 ON 1 APPOINTMENT

Plans and elevations are artist's renderings only, may not accurately represent the actual condition of a home as constructed, and may contain options which are not standard on all models. We reserve the right to make changes to these floor plans, specifications, and elevations without prior notice. Stated dimensions and square footage are approximate and should not be used as representation of the home's precise or actual size.



1590 Alfalfa, Johnstown, CO 80534

Community: Granary Trailblazer Collection - Single Family Homes

Floor Plan

\$529,090

2,288 Finished Sq Ft. 3 Bedrooms 2.5 Full Baths 2 Car Garage 2.0 Stories



SECOND FLOOR

CALL 970-716-6088 TO SCHEDULE A 1 ON 1 APPOINTMENT

Plans and elevations are artist's renderings only, may not accurately represent the actual condition of a home as constructed, and may contain options which are not standard on all models. We reserve the right to make changes to these floor plans, specifications, and elevations without prior notice. Stated dimensions and square footage are approximate and should not be used as representation of the home's precise or actual size.