

408 66th Ave, Greeley, CO 80634

**Community:** Northridge Trails Story Collection - Single Family Homes

**Floor Plan**

**\$565,035**

2,540 Finished Sq Ft. 4 Bedrooms 3.0 Full Baths 2 Car Garage 2.0 Stories



**\*\*MOVE-IN READY!\*\***

This Christie floorplan is a 4 bed, 3bath ranch style home with versatile design. Featuring a foyer and galley way entrance, this home feels elegant and special immediately upon entrance. The kitchen flows seamlessly into the living and dining rooms, giving you ample space to gather with your family. This home backs to open space and has a walk-out, finished basement!

This home is finished with Stainless steel kitchen appliances with gas range, white maple cabinets, white quartz countertops throughout, warm gray herringbone tiled kitchen backsplash, vaulted ceiling in master, mineral maple luxury vinyl plank flooring throughout entire main floor, quartz carpet in basement, 12 x 24 carrara tile in master shower, a/c, agreeable gray interior wall color, attitude gray, requisite gray, and rock bottom exterior paint colors, shadegrown front door

Photos are of the actual home!

**CALL 970-716-6088 TO SCHEDULE A 1 ON 1 APPOINTMENT**

Plans and elevations are artist's renderings only, may not accurately represent the actual condition of a home as constructed, and may contain options which are not standard on all models. We reserve the right to make changes to these floor plans, specifications, and elevations without prior notice. Stated dimensions and square footage are approximate and should not be used as representation of the home's precise or actual size.



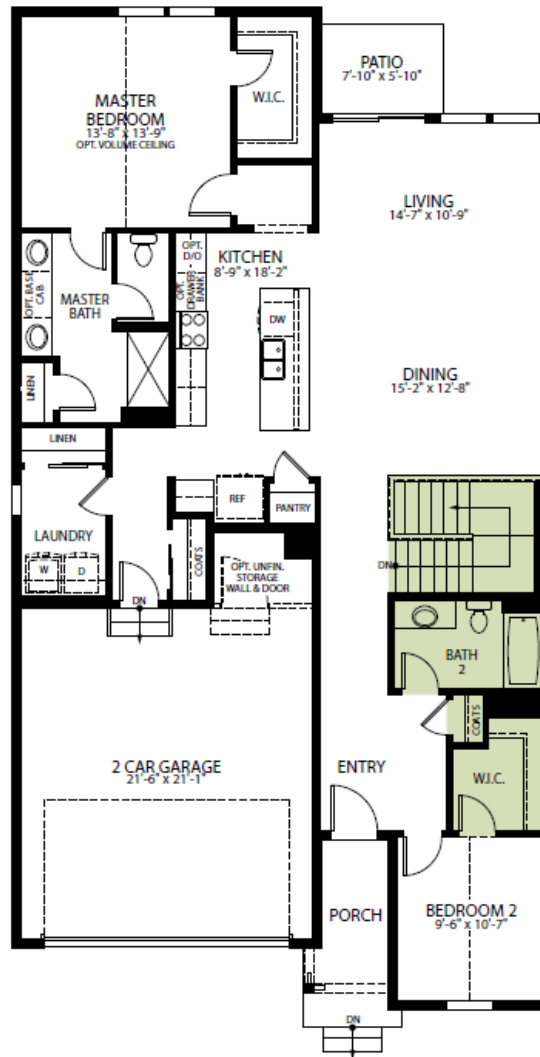
408 66th Ave, Greeley, CO 80634

**Community:** Northridge Trails Story Collection - Single Family Homes

**Floor Plan**

**\$565,035**

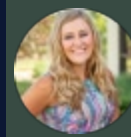
2,540 Finished Sq Ft. 4 Bedrooms 3.0 Full Baths 2 Car Garage 2.0 Stories



FLOOR PLAN W/ STAIRS

CALL 970-716-6088 TO SCHEDULE A 1 ON 1 APPOINTMENT

Plans and elevations are artist's renderings only, may not accurately represent the actual condition of a home as constructed, and may contain options which are not standard on all models. We reserve the right to make changes to these floor plans, specifications, and elevations without prior notice. Stated dimensions and square footage are approximate and should not be used as representation of the home's precise or actual size.



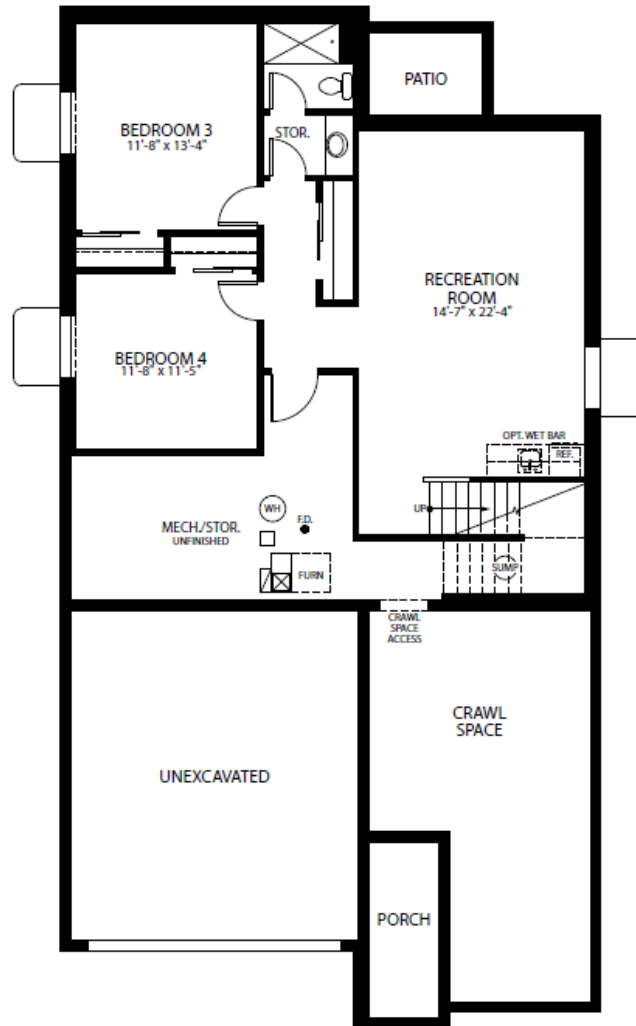
408 66th Ave, Greeley, CO 80634

**Community:** Northridge Trails Story Collection - Single Family Homes

Floor Plan

**\$565,035**

2,540 Finished Sq Ft. 4 Bedrooms 3.0 Full Baths 2 Car Garage 2.0 Stories



FINISHED FULL BASEMENT

CALL 970-716-6088 TO SCHEDULE A 1 ON 1 APPOINTMENT

Plans and elevations are artist's renderings only, may not accurately represent the actual condition of a home as constructed, and may contain options which are not standard on all models. We reserve the right to make changes to these floor plans, specifications, and elevations without prior notice. Stated dimensions and square footage are approximate and should not be used as representation of the home's precise or actual size.