

# Hemingway

**Community:** Mosaic Story Collection - Single Family Homes

 2,260 - 2,710 Finished Sq Ft.  3 Bedrooms  2.5 Full Baths  2 Car Garage  2.0  
Stories



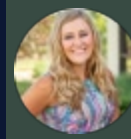
## The Hemingway Plan

The Hemingway features a stunning entrance with a long hallway perfect for a gallery wall. The kitchen, dining and living room all flow together seamlessly providing ample space for gathering. The large kitchen island houses the dishwasher for functional living and the spacious counter tops are a chef's dream! The second floor provides an exceptional loft, great for a kid's play area, a movie room or office space. This home also includes a finished basement with a rec room.

**CALL 970-716-6088 TO SCHEDULE A 1 ON 1 APPOINTMENT**

Plans and elevations are artist's renderings only, may not accurately represent the actual condition of a home as constructed, and may contain options which are not standard on all models. We reserve the right to make changes to these floor plans, specifications, and elevations without prior notice. Stated dimensions and square footage are approximate and should not be used as representation of the home's precise or actual size.





# Hemingway

**Community:** Mosaic Story Collection - Single Family Homes

2,260 - 2,710 Finished Sq Ft.
 3 Bedrooms
 2.5 Full Baths
 2 Car Garage
 2.0 Stories

## Newest w dimensions

### Hemingway Floor Plan



All measurements are approximate and not guaranteed. Illustration provided for marketing and convenience only and is not part of a legally binding contract.

**CALL 970-716-6088 TO SCHEDULE A 1 ON 1 APPOINTMENT**

Plans and elevations are artist's renderings only, may not accurately represent the actual condition of a home as constructed, and may contain options which are not standard on all models. We reserve the right to make changes to these floor plans, specifications, and elevations without prior notice. Stated dimensions and square footage are approximate and should not be used as representation of the home's precise or actual size.