



Ford

Community: Mosaic Condos

Starting From
\$387,900

 1,166 Finished Sq Ft.
  2 Bedrooms
  2 Full Baths
  1 Car Garage
  2.0 Stories



ELEVATION 1



ELEVATION 2



ELEVATION 3



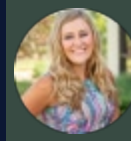
ELEVATION 4

The Ford Plan

The Ford is a spacious, second-level unit condo that greets you with a beautiful entrance upon arrival. Once up the stairs, you'll find an open-concept living, dining and kitchen space with intriguing vaulted ceilings. Right off the side of the living room is a covered deck perfect for enjoying your morning coffee. Down the hall from the kitchen you'll find a guest room or remote working space, guest bath, laundry room and the Owner's bedroom suite. This unit has an attached garage.



CALL 970-716-6088 TO SCHEDULE A 1 ON 1 APPOINTMENT

Plans and elevations are artist's renderings only, may not accurately represent the actual condition of a home as constructed, and may contain options which are not standard on all models. We reserve the right to make changes to these floor plans, specifications, and elevations without prior notice. Stated dimensions and square footage are approximate and should not be used as representation of the home's precise or actual size.

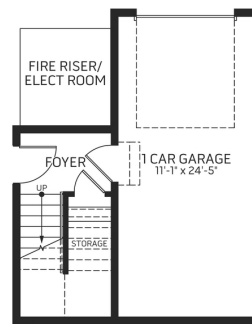


Ford

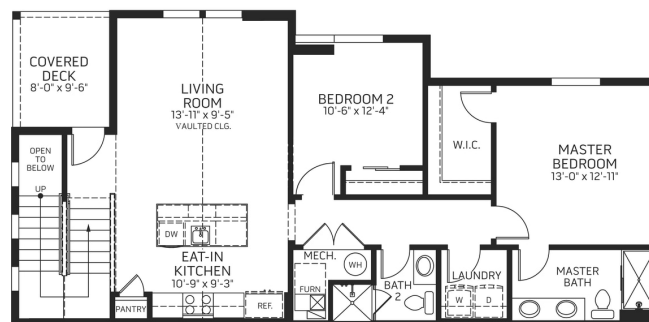
Community: Mosaic Condos

 1,166 Finished Sq Ft.
  2 Bedrooms
  2 Full Baths
  1 Car Garage
  2.0 Stories

Starting From
\$387,900



Plan: Ford



*Floor plan and specifications subject to change without notice.

CALL 970-716-6088 TO SCHEDULE A 1 ON 1 APPOINTMENT

Plans and elevations are artist's renderings only, may not accurately represent the actual condition of a home as constructed, and may contain options which are not standard on all models. We reserve the right to make changes to these floor plans, specifications, and elevations without prior notice. Stated dimensions and square footage are approximate and should not be used as representation of the home's precise or actual size.