



Sage with ADU (Attached dwelling unit)

Community: Bloom Cottages

Starting From
\$610,000

 2,041 Finished Sq Ft.  5 Bedrooms  4 Full Baths  2 Car Garage  2.0 Stories



ELEVATION 1



ELEVATION 2



ELEVATION 3

The Sage with ADU (Attached dwelling unit) Plan

The Sage is where classic cottage charm meets modern-day flexibility. With a spacious 4-bedroom, 3-bath main home and a fully detached Accessory Dwelling Unit (ADU), this plan is ideal for families who need room to grow —or room to host.

Inside the main home, enjoy 1,538 sq ft of thoughtfully designed living space with open-concept gathering areas, a main-level bedroom, and a variety of Craftsman, Farmhouse, or Bungalow-inspired elevations.

The included ADU adds even more value: 503 sq ft of completely private living space featuring 1 bedroom, 1 bathroom, a full kitchen, and an open living area—perfect for guests, renters, or a remote work haven. Below, a private 2-car garage offers added convenience and storage.

Two complete homes. One lot. Limitless options for living, renting, or reimagining your lifestyle.

CALL 970-716-6088 TO SCHEDULE A 1 ON 1 APPOINTMENT

Plans and elevations are artist's renderings only, may not accurately represent the actual condition of a home as constructed, and may contain options which are not standard on all models. We reserve the right to make changes to these floor plans, specifications, and elevations without prior notice. Stated dimensions and square footage are approximate and should not be used as representation of the home's precise or actual size.

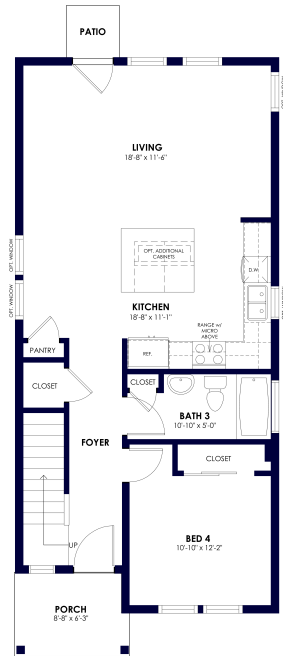


Sage with ADU (Attached dwelling unit)

Community: Bloom Cottages

 2,041 Finished Sq Ft.
  5 Bedrooms
  4 Full Baths
  2 Car Garage
  2.0 Stories

Starting From
\$610,000



CALL 970-716-6088 TO SCHEDULE A 1 ON 1 APPOINTMENT

Plans and elevations are artist's renderings only, may not accurately represent the actual condition of a home as constructed, and may contain options which are not standard on all models. We reserve the right to make changes to these floor plans, specifications, and elevations without prior notice. Stated dimensions and square footage are approximate and should not be used as representation of the home's precise or actual size.

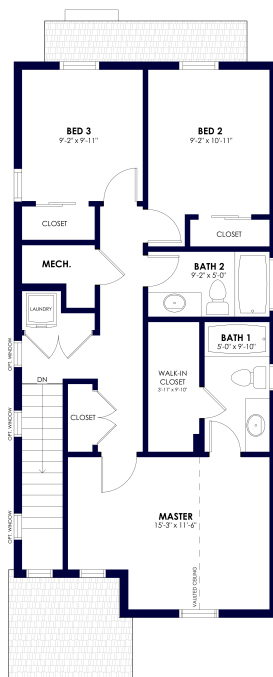


Sage with ADU (Attached dwelling unit)

Community: Bloom Cottages

 2,041 Finished Sq Ft.
  5 Bedrooms
  4 Full Baths
  2 Car Garage
  2.0 Stories

Starting From
\$610,000



CALL 970-716-6088 TO SCHEDULE A 1 ON 1 APPOINTMENT

Plans and elevations are artist's renderings only, may not accurately represent the actual condition of a home as constructed, and may contain options which are not standard on all models. We reserve the right to make changes to these floor plans, specifications, and elevations without prior notice. Stated dimensions and square footage are approximate and should not be used as representation of the home's precise or actual size.

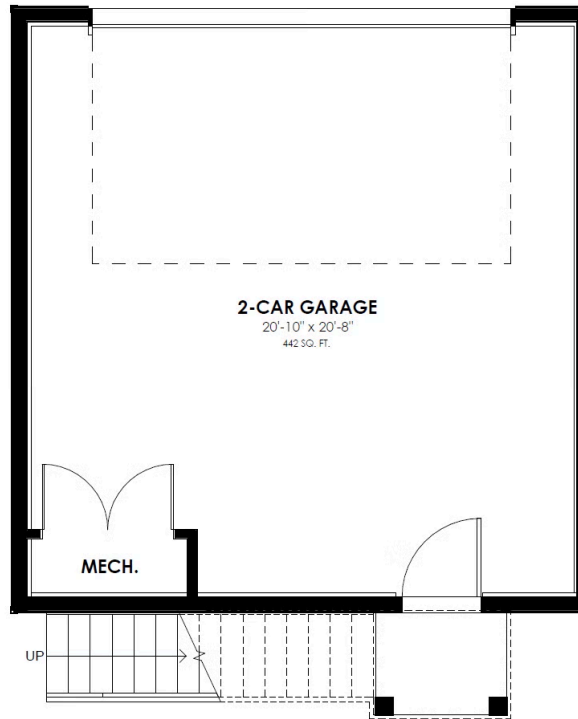


Sage with ADU (Attached dwelling unit)

Community: Bloom Cottages

 2,041 Finished Sq Ft.
  5 Bedrooms
  4 Full Baths
  2 Car Garage
  2.0 Stories

Starting From
\$610,000



CALL 970-716-6088 TO SCHEDULE A 1 ON 1 APPOINTMENT

Plans and elevations are artist's renderings only, may not accurately represent the actual condition of a home as constructed, and may contain options which are not standard on all models. We reserve the right to make changes to these floor plans, specifications, and elevations without prior notice. Stated dimensions and square footage are approximate and should not be used as representation of the home's precise or actual size.



Sage with ADU (Attached dwelling unit)

Community: Bloom Cottages

Starting From

\$610,000 2,041 Finished Sq Ft.  5 Bedrooms  4 Full Baths  2 Car Garage  2.0 Stories

CALL 970-716-6088 TO SCHEDULE A 1 ON 1 APPOINTMENT

Plans and elevations are artist's renderings only, may not accurately represent the actual condition of a home as constructed, and may contain options which are not standard on all models. We reserve the right to make changes to these floor plans, specifications, and elevations without prior notice. Stated dimensions and square footage are approximate and should not be used as representation of the home's precise or actual size.